



Allegheny County Dump Site Survey and Assessment Final Report 2017



ACKNOWLEDGMENTS

This report is the result of contributions from many sources.

Municipal leaders throughout the county provided information and assisted in identifying and/or viewing illegal dump sites.

Jeremy Bartle developed and upgraded the Allegheny CleanWays database and interactive dump site map as needed and provided technical assistance throughout the project.

Joy Smallwood, Environmental Health Administrator for Allegheny County, provided support in securing funding for the project; making connections to municipal leaders; providing information about county recycling and waste hauling; and editing the final report.

The following Allegheny CleanWays staff and contract surveyors each drove hundreds of miles; snapped thousands of photographs; and spent countless hours collecting, compiling, and analyzing data for this report:

Valerie Morgan, Surveyor
Alfred Chernov, Surveyor (Staff)
R. Evan Clark, Surveyor (Staff)
Joseph Divack, Senior Surveyor (Staff)
Danielle Erdos-Kramer, Surveyor
Anagha LeLe, Surveyor
Myrna Newman, Senior Surveyor/Executive Director (Staff)
Janée Romesberg, Project Leader (Staff)
Samantha Weaver, Surveyor (Staff)
David Yake, Surveyor (Staff)

Lastly, this work would have been impossible without generous funding through a grant from the Allegheny County Health Department Environmental Health Fund.



Allegheny CleanWays

Keep Pittsburgh Beautiful

2801 North Charles Street,
Pittsburgh, PA 15214

Phone: 412.381.1301

www.alleghencycleanways.org

TABLE OF CONTENTS

ACKNOWLEDGMENTS	i
EXECUTIVE SUMMARY	iv
BACKGROUND	1
PURPOSE OF SURVEY	1
DEFINITION OF ILLEGAL DUMPING	1
IMPACTS OF ILLEGAL DUMPING	2
SURVEY METHOD	3
SURVEY RESULTS	4
ANALYSIS OF RESULTS	6
RECOMMENDATIONS	11
SUMMARY	13
APPENDIX A: Allegheny County Illegal Dumping Site Characteristics by Municipality	14
APPENDIX B: Allegheny County Illegal Dumping Waste Characteristics by Municipality	32

LIST OF FIGURES

Figure 1: Distribution of dump sites	4
Figure 2: Dumpsite tonnage	5
Figure 3: Debris distribution: Types of trash found at each dump site	5
Figure 4: Site types	6
Figure 5: Terrain types	7
Figure 6: Sites near greenspace	7
Figure 7: Distance to waterways	7
Figure 8: Distance to nearest residence	8
Figure 9: TVs found at dump sites compared to e-waste recycling accessibility	9

LIST OF TABLES

Table 1: Municipalities with greatest number of sites	4
Table 2: Municipalities with greatest tonnage	5
Table 3: Municipalities with greatest number of sites compared to EJ Index Score	8
Table 4: Municipalities with greatest tonnage compared to EJ Index Score	9

EXECUTIVE SUMMARY

Land pollution is an often overlooked or casually dismissed problem by government and other authorities. Yet, when surveyed, residents of many Allegheny County communities note litter and illegal dumping as one of their primary concerns. Illegal dumping and litter degrade communities and the quality of life of residents who live near them. They pose risks to public health and environmental quality, and create a sense of neglect, reducing property values and inviting other crimes.

Allegheny CleanWays is a non-profit that has been working to eliminate illegal dumping and littering in Allegheny County since 2000, focusing most of its work on the City of Pittsburgh. Having removed close to **5 million pounds** of debris, including **30,239 tires**, from the wooded hillsides, empty lots, alleys, roadways, and riverbanks of the Pittsburgh area, Allegheny CleanWays has begun looking at ways to address illegal dumping in the rest of the county more effectively.

The first step in addressing any problem is to gauge and assess the problem. To that end, Allegheny CleanWays determined that a current assessment of illegal dumping in Allegheny County was needed. The last assessment, completed in 2005 by PA CleanWays (now Keep PA Beautiful), found 202 illegal dump sites, but did not visit every municipality nor look beyond what was visible from the public right-of-way. Additionally, many changes that have occurred in the past dozen years within the county making it likely that the sites have changed.

For the assessment, Allegheny CleanWays staff and contracted surveyors set a goal of driving down every road in Allegheny County to look for illegal dumping. When dumping was spotted, the surveying team assessed the site for contents, size, and other distinguishing characteristics such as distance to nearest residence, difficulty in cleanup, or proximity to water.

To ensure accuracy and thoroughness of the survey process, a second, more thorough, 'walking' assessment was done in two municipalities. In this assessment, more seasoned assessors drove through the communities, stopping periodically to investigate hillsides, ravines, and other spaces that might have been missed by a driving-only survey. While the walking assessment did identify a few additional sites that were missed in the initial driving survey, the results were similar enough to provide confidence in the survey method.

In all, 486 illegal dump sites were found in Allegheny County (not including Pittsburgh), with half of the sites concentrated in just eight municipalities and almost half of the municipalities (46%) having no identified dumping at all. The estimated weight of the identified debris totals 1,404 tons and includes approximately 27,000 tires.

Of the 486 sites found, 78% were less than 100 ft. from a residence and almost 25% were 100ft or less from a visible waterway. The three most common materials found at the sites were tires, renovation debris, and household trash such as toys, clothing, furniture, etc.

BACKGROUND

Founded in 2000 as a chapter of PA CleanWays (now Keep Pennsylvania Beautiful), and incorporated as a 501(c)(3) in 2005, Allegheny CleanWays empowers and engages people to eliminate litter and illegal dumping in Allegheny County. Since its origins, Allegheny CleanWays has been instrumental in engaging and collaborating with community groups to remove illegally discarded debris from vacant lots, greenways, streets, and riverbanks; and to prevent litter and illegal dumping from occurring in the first place.

The work of Allegheny CleanWays has always had three main goals - prevention, cleanup, and stewardship/beautification. For the past several years, Allegheny CleanWays has been expanding and refining activities to maximize the effectiveness at meeting those three goals and has focused efforts primarily within the City of Pittsburgh.

As significant progress has been made in eliminating illegal dump sites within the City of Pittsburgh, Allegheny CleanWays has begun looking beyond the city to gauge the problem of illegal dumping in the county as a whole.

PURPOSE OF SURVEY

The purpose of the illegal dumpsite survey was to assess and document the extent and characteristics of illegal dumping in Allegheny County to better address the problem. With the information obtained through the survey and site assessment, Allegheny CleanWays will work with the county and individual municipalities to:

- Prioritize sites for cleanup and abatement
- Identify funding for illegal dump site abatement
- Develop plans, policies, or procedures to increase proper disposal or recycling of the most common materials found at illegal dump sites
- Monitor and track cleanup and prevention measures.

DEFINITION/DESCRIPTION OF ILLEGAL DUMPING

Illegal dumping is defined as a significant mass of trash discarded unlawfully on public or private land and waterways. It can be the result of a single event, such as a renovator dumping demolition debris over a neglected hillside, or can grow over time. Highly littered areas sometimes accumulate so much material that they appear as if illegal dumping has occurred, and untended sites often attract more debris.

IMPACTS OF ILLEGAL DUMPING

Illegal dumping is an eyesore that mars the landscape and can cause whole neighborhoods to appear neglected. It affects more than just aesthetics, however, having significant environmental, health, and economic impacts as well.

Environmental

The environmental impacts of illegal dumping are numerous and far-reaching. One common and very visible problem is that wildlife often become entangled by or ingest illegally dumped trash. The effects of mismanaged debris extend far beyond raccoons with their heads stuck in tin cans or birds entangled in fishing line, however. Researchers are only beginning to understand the tremendous watershed damage done by plastics as they break down into food-mimicking microplastics and toxic chemical compounds. Pesticides, oil, cleaning products, and other commonly dumped household chemicals can pollute soil and be washed into streams and rivers during rain events. Even organic material like feces, food waste, lawn clippings, or animal carcasses can nurture dangerous microbial activity that can survive in the soil and ground water for several months.¹ Debris that is dumped in the path of intermittent streams or storm water runoff can also interfere with drainage, causing flooding and/or increased soil erosion.

Health and Safety

In addition to water quality issues, illegal dumping raises several other health concerns. People, especially children, are likely to be injured by hazardous materials like broken glass, twisted metal, or syringes while exploring dumpsites. Piles of debris can attract, feed, and shelter disease-carrying rodents and other pests. Nearly perfect mosquito breeding conditions are created when materials such as tires are allowed to collect standing water, increasing the chance of spreading mosquito-borne illnesses such as West Nile and Zika viruses. Large tire piles are also possible fire risks. The toxic smoke and residue emitted by a tire fire has clear potential health impacts to anyone living downwind of the fire.

Illegal dumping and litter also negatively influences mental health. A 2016 study² focused on youth living in Pittsburgh's Homewood neighborhood found that the presence of litter and illegal dumping made residents feel stigmatized by those outside of the community. A University of Pennsylvania study³ shows that the cleaning and greening of previously blighted lots slows heart rates and reduces stress.

¹ Bartkowiak, A., Breza-Boruta, B. & Lemanowicz, J. (2016) Assessment of the content of heavy metals and potential pathogenic microorganisms in soil under illegal dumping sites. *Environmental Earth Sciences*. 75: 1401.
<http://link.springer.com/article/10.1007/s12665-016-6217-x>

² Teixeira, S., & Zuberi, A. (2016). Mapping the Racial Inequality in Place: Using Youth Perceptions to Identify Unequal Exposure to Neighborhood Environmental Hazards. *International Journal of Environmental Research and Public Health*, 13(9), 844.
<http://doi.org/10.3390/ijerph13090844>

³ South, E.C., Kondo, M.C., Cheney, R.A., Branas, C.C. (2015) Neighborhood blight, stress, and health: a walking trial of urban greening and ambulatory heart rate. *Am J Public Health*. 105(5):909–913.
<http://ajph.aphapublications.org/doi/full/10.2105/AJPH.2014.302526>

Economic

Illegal dumping and other forms of blight are costly burdens to communities. The Tri-COG Collaborative's Financial Impact Analysis of Blight found that blighted properties decrease surrounding property values, cause losses in tax revenue, and increase spending on code enforcement, public safety, public works, and demolition services. The study shows direct and indirect costs of blight total hundreds of millions of dollars for the 41 communities in the collaborative.⁴

Illegal dumping is also expensive to clean up. A recent study by Keep PA Beautiful found that the average cost to clean up illegally discarded debris in Pennsylvania is \$619 per ton.⁵ Statewide, the costs average more than \$2 million annually.

SURVEY METHOD

Allegheny CleanWays set a goal to survey as much of all 130 municipalities as possible with the funds available. Since the City of Pittsburgh had been surveyed in 2009 and most of the cleanup work since then has been concentrated in the city, Pittsburgh was not included in the survey.

The initial step of the survey was to send an email to all municipalities for which email addresses were available and letters to the few for whom they were not. The correspondence explained the nature of the survey and asked the stakeholders for assistance in identifying dump sites. Only twelve contacts responded, with most reporting no-dumping in their municipalities. Municipalities that self-reported no dumping or which were expected to have no dumping (because of the 2005 survey or because geography and demographics make it unlikely), became a lower priority for assessment.

Beginning in November of 2016 (after vegetation had died down) and ending in late May 2017, teams of two surveyors were sent out to the municipalities to look for illegal dumping. Surveyors were sent in teams of two primarily to increase safety and accuracy. Two-person teams enabled one person to concentrate on driving while the other person looked for illegal dump sites; and for one person to assess the site while the other entered the data. It also provided an extra layer of protection for each person should injury or unpleasant interaction with a resident occur. Each surveyor wore an orange or yellow Allegheny CleanWays-branded safety vest for visibility and authority.

⁴ Delta Development Group, Inc. (2013) Financial Impact of Blight on the Tri-COG Communities.
<http://steelriverscog.org/wp-content/uploads/2014/08/BlightImpactFullReport.pdf>

⁵ Keep Pennsylvania Beautiful. (2014). Statewide Illegal Dumping Cost Research.
http://www.keeppabeautiful.org/Portals/0/PDFs/KPB%20-%20Statewide%20Illegal%20Dumping%20Cost%20Research_Final_8-20-2014.pdf

Each team carried a tablet or laptop and portable Wi-Fi, so that assessments of illegal dump sites could be immediately logged into the database. A site assessment included cataloging the type and amount of trash at the site. It also looked at characteristics such as area type (e.g. empty lot, wooded hillside alleyway), steepness, and the proximity of the site to water, homes, or green spaces. Photos were taken, and GPS coordinates were documented.

The one major limitation of the survey is that a driving survey favors discovery of sites that are only visible from the roadways, thus leaving the potential for some sites to be missed. Allegheny CleanWays took every effort to minimize missed sites by using staff members in the survey teams. CleanWays staff have much experience in identifying likely dump site locations. Thus, if a roadside ran above a wooded hillside or if it looked like a road used to exist or had houses on it at one time, the teams pulled over and inspected the area more thoroughly, even if dumping was not initially seen. Additionally, two municipalities were chosen as “controls” and were surveyed twice - once by the original team and second time by a team of more seasoned staff members who walked large sections of the municipality instead of just driving. While the walking assessment did identify additional sites that were missed in the initial driving survey, the results were not significantly different.

SURVEY RESULTS

The survey identified 486 illegal dump sites in 70 Allegheny County municipalities (not counting the City of Pittsburgh), totaling approximately 1,404 tons. As shown in Figure 1, fifty-nine municipalities reported or were shown to have no dumping at all. Of the communities where dumping was identified, the majority (56) had 10 or fewer sites. Meanwhile just eight municipalities, mostly south and east of Pittsburgh, contained half of all the illegal dump sites found (Table 1).

Figure 1: Distribution of dump sites

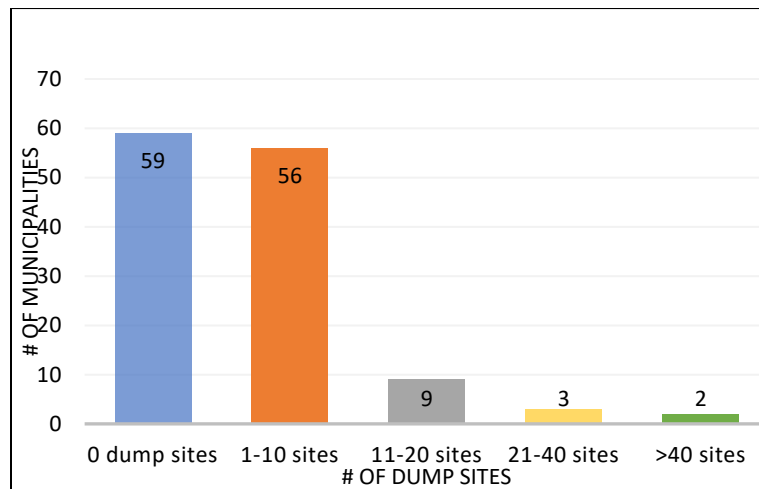


Table 1: Municipalities with the greatest number of sites

8 Municipalities that contain ½ of all sites	# of Sites
McKeesport	48
Penn Hills	43
Wilkinsburg	36
Braddock	32
Forward	28
Duquesne	20
North Braddock	18
Clairton	15
	240

The size of the sites varied from a few hundred pounds to more than 350 tons, but an overwhelming majority of the sites (92%) were under 5 tons (Figure 2). The largest sites tended to also be tire dumps, containing 500 or more tires. As shown in Table 2, the municipalities with the largest cumulative tonnage also tended to be east and south of Pittsburgh, with a few notable exceptions, and tended to contain large tire dumps.

Figure 2: Dump site tonnage

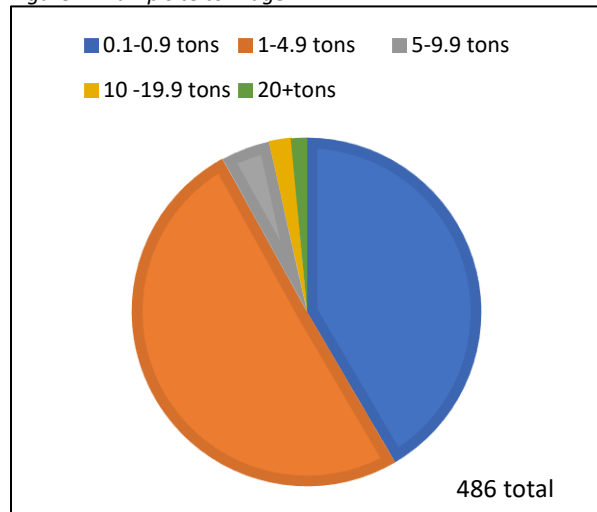
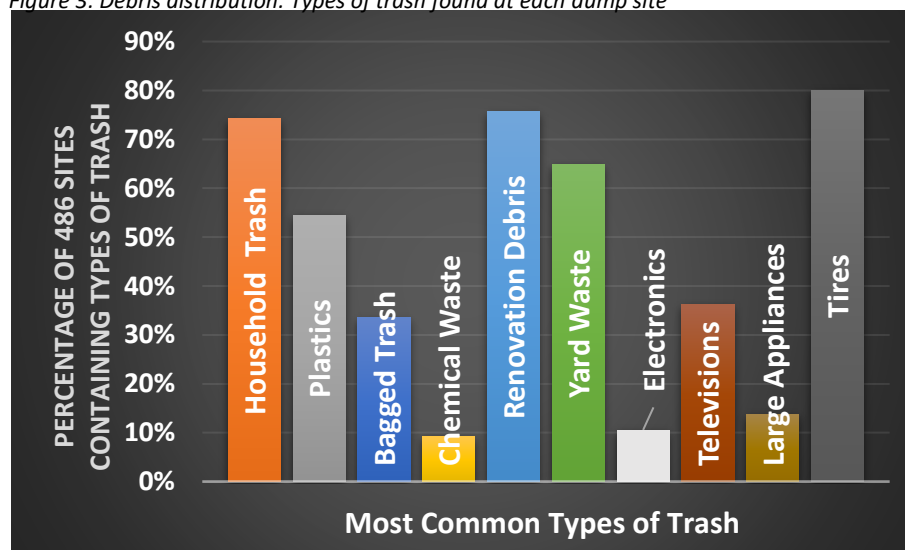


Table 2: Municipalities with the greatest tonnage

Municipality	Total Tonnage	# of Tires
Kennedy Township	351.5	>10,000
McKeesport	221.2	4,780
Braddock	115.4	2,805
Penn Hills	73.8	1,365
Wilkinsburg	73.7	1,158
Jefferson Hills	46.9	1,272
McKees Rocks	37	133
Forward	35.2	532
Plum Borough	34.1	100
North Braddock	31	372
Duquesne	30.2	148

Figure 3 below shows that the three most commonly disposed items found at the sites were tires, household trash (e.g. toys, clothing, furniture, lamps, etc.), and renovation debris. Eighty percent of the sites had at least one tire amongst the debris, with several sites having more tires than could be counted. Seventy-six percent of the sites contained some sort of construction or demolition debris (i.e. "Renovation Debris"), and 74% of them contained household trash. Yard waste and plastics were both found at more than half of the sites, and televisions were found at more than 1/3 of the sites. A comprehensive chart of all waste characteristics can be found in Appendix B.

Figure 3: Debris distribution: Types of trash found at each dump site



ANALYSIS OF RESULTS

Illegal dumping is a problem that plagues every county in Pennsylvania and every state in the country. It is costly to clean up; has environmental, social, health, and economic implications; and spoils our visual landscape. It is, without a doubt, land pollution. As such, it should be given the same level of attention as its dirty cousins, air and water pollution, and attacked with the same systematic thinking.

Cleanup Costs

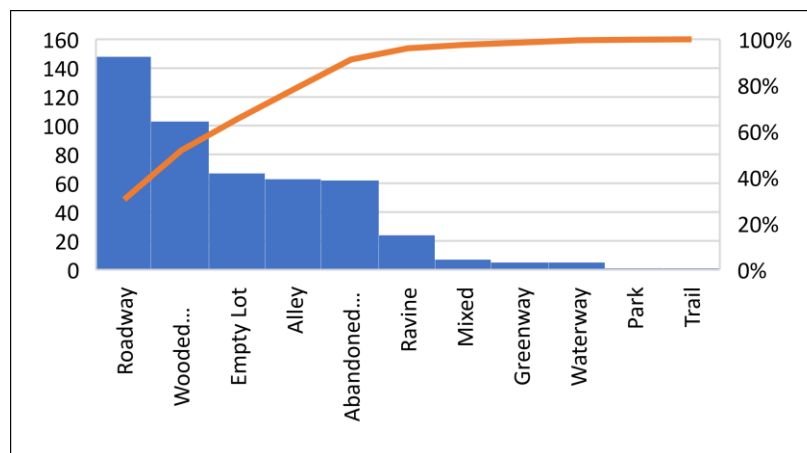
In 2014, Keep PA Beautiful calculated that cleaning up illegal dumping costs an average of \$619/ton.⁶ With an estimated 1,404 tons of illegally dumped debris found in Allegheny County, the cost to clean up all sites would be approximately **\$842,400**. Of that, approximately \$81,114⁷ would be for recycling/proper disposal of illegally discarded car tires alone. An additional \$28,140⁸ of that cost would be for proper handling/recycling of televisions.

Patterns

Several patterns emerged in the results we found about the places where illegal dumping occurred and the types of materials that were typically dumped.

- 1) The **location** of dumpsites showed some interesting patterns. While almost 30% of the sites were located along roadways, a substantial number of sites (103) were found on wooded hillsides. Together, roadways and wooded hillsides made up 51% of the area types where illegal dumping was found. Figure 4 below shows all the various types of illegal dumping sites.

Figure 4: Site types



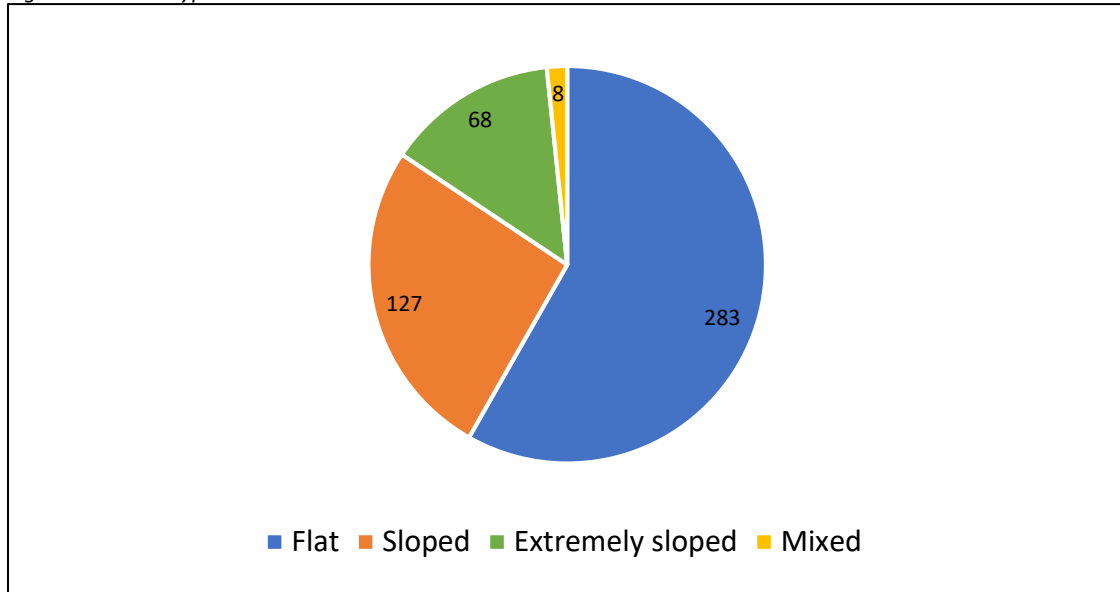
⁶ Keep Pennsylvania Beautiful. (2014). Statewide Illegal Dumping Cost Research. http://www.keppabeautiful.org/Portals/0/PDFs/KPB%20-%20Statewide%20Illegal%20Dumping%20Cost%20Research_Final_8-20-2014.pdf

⁷ Based on an average cost of \$3.00/tire

⁸ Based on an average cost of \$25/television

- 2) Correspondingly, the **terrain** at most sites (58%) was flat, but 195 of the sites (40%) were sloped or extremely sloped (Figure 5).

Figure 5: Terrain types



- 3) The vast majority of sites were located in or near some kind of **green space** (Figure 6) and 110 sites (almost 25%) were located within 100 ft. of a visible **waterway** (Figure 7).

Figure 6: Sites near green space

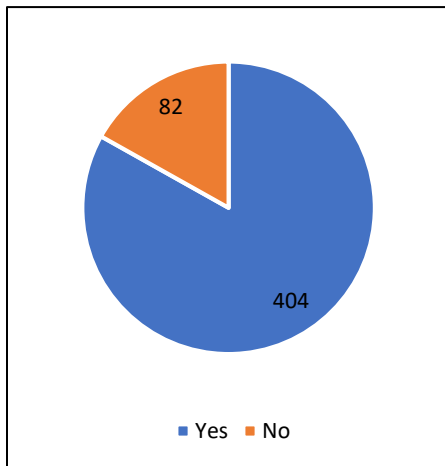
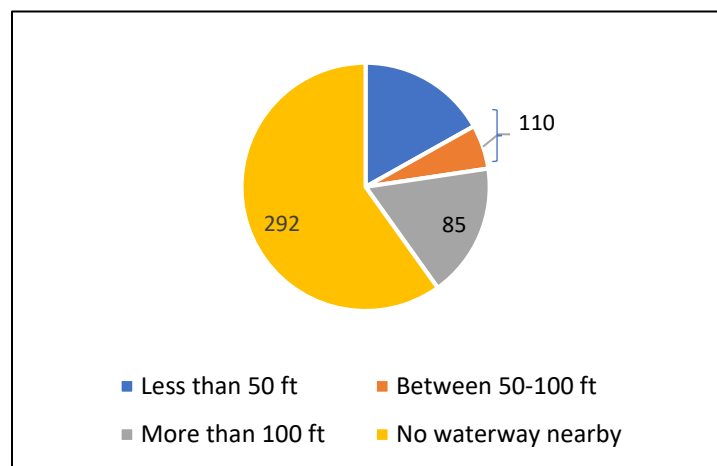
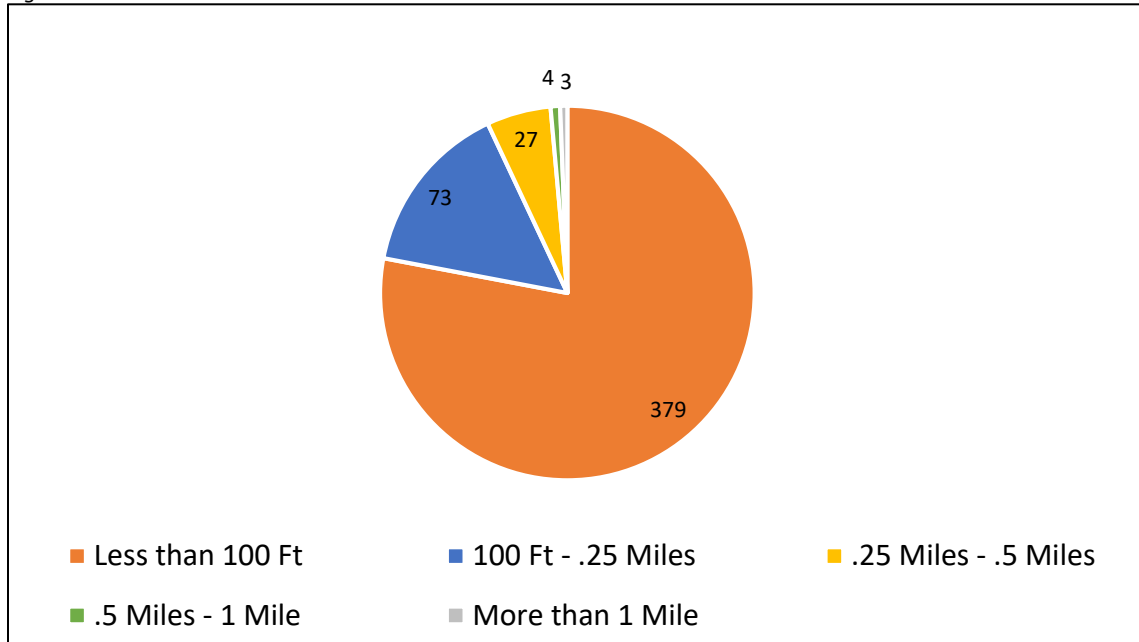


Figure 7: Distance to waterways



- 4) Most alarming were the number of sites near residences. A total of 379 of the 486 sites (78%) were less than 100 ft. from someone's home, and all but seven sites were within 0.5 miles of a residence (Figure 8).

Figure 8: Distance to nearest residence



5) When looking at characteristics of municipalities where illegal dumping occurs, there appears to be a strong correlation between municipalities with high rates and/or tonnage of illegal dumping and those that have been designated as areas of high or highest need in a recent environmental justice report.⁹ In fact, as shown in Table 3 below, seven out of the eight municipalities with the largest number of dump sites have areas of high or highest need on the environmental justice index, meaning they are in communities which bear a larger proportion of environmental risk factors.

Table 3: Municipalities with the greatest number of sites compared to Environmental Justice Index Score

8 Municipalities that contain ½ of all sites	# of Sites	EJ Index Score
McKeesport	48	Highest
Penn Hills	43	Low-High
Wilkesburg	36	High-Highest
Braddock	32	High
Forward	28	Lowest
Duquesne	20	Highest
North Braddock	18	High
Clairton	15	High

⁹ Allegheny County Health Department. (2017). Allegheny County Environmental Justice: Identifying High Priority Communities in Allegheny County. <http://www.achd.net/biostats/pubs/pdf/2017-AC-Environmental-Justice-Index.pdf>

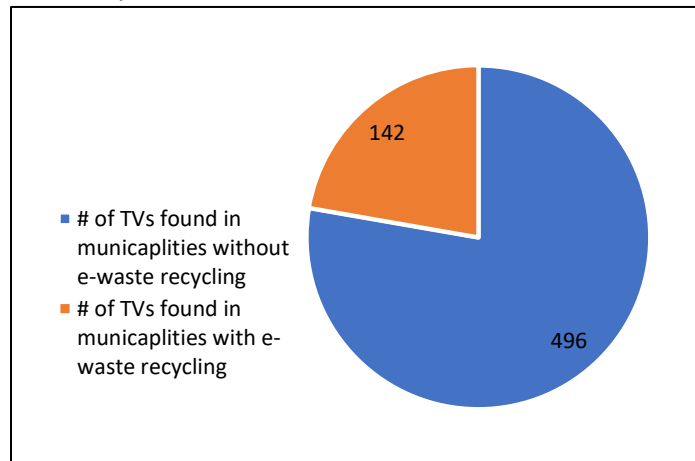
Similarly, seven of the eleven municipalities with most tonnage are of high or highest need on the environmental justice index (Table 4).

Table 4: Municipalities with the greatest tonnage compared to Environmental Justice Index Score

Municipality	Total Tonnage	EJ Index Score
Kennedy Township	351.5	Low
McKeesport	221.2	Highest
Braddock	115.4	High
Penn Hills	73.8	Low - High
Wilksburg	73.7	High-Highest
Jefferson Hills	46.9	Low-Moderate
McKees Rocks	37	Highest
Forward	35.2	Lowest
Plum Borough	34.1	Lowest - Low
North Braddock	31	High
Duquesne	30.2	Highest

- 6) Lastly, our findings showed a correlation between the number of TVs found at dump sites and whether e-waste recycling is available within the municipality in which the sites are located. Although TVs were found in most municipalities, 78% of all TVs found were found in municipalities **without** access to curbside recycling of e-waste (Figure 9 and Appendix B).

Figure 9: TVs found at dump sites compared to e-waste recycling accessibility



Comprehensive chart showing all site and waste characteristics can be found in Appendices A and B.

Outliers

For various reasons, several dump sites that were surveyed have data that was outside the norm. Each “outlier” site is listed below with a description of the site and a possible explanation for the skewed data.

- 1) Creek Street in Kennedy Township – Creek Street runs along Chartiers Creek in Kennedy Township. The data collected on this site suggests that the site had once been (or possibly still is) used as a salvage yard. The Allegheny County Real Estate Portal shows that Frank Bryan of Bryan Materials Group currently own the property.
- 2) Clark St. and Maple Ave., Duquesne – Two assessments (a regular assessment and a control) were done of the city of Duquesne. Both assessments identified large quantities of electronics (particularly TVs) and other trash near what appeared to be an abandoned building at the corner of Clark Street and Maple Ave. A search of properties on the Allegheny County Real Estate Portal revealed that the property is owned by the City of Duquesne, making it likely that this site (with >300 TVs) is a staging area for the city rather than a dump site. While the site is included in the survey, the stats were not included in Figure 9 above.
- 3) Tire dumps – Very large tire dumps were found in several communities, suggesting the work of commercial haulers. While best estimates were given for the tire piles, some were so large or so hidden (e.g. over hillsides, in abandoned houses, etc.), the total number of tires was very difficult to estimate accurately. In some cases, assessors merely indicated 1000+, meaning that there were far too many to count. As a result, the number of tires in the survey could be off by + or - several thousand tires.

Comparison to 2005 Survey

Of the 202 illegal dump sites identified in the 2005 PA CleanWays Illegal Dump Survey of Allegheny County, only 65 remain, suggesting that there are 421 new dump sites in the county since 2005. That assumption is not completely accurate, however. There are many reasons for the discrepancies between the two surveys. The biggest reason is that the 2005 survey did not survey all municipalities. Those that were deemed to be high crime/risk areas were not assessed. As a result, several of the municipalities found to have the highest amount of dumping in the current survey, such as McKeesport, McKees Rocks, Duquesne, Clairton, Braddock, and North Braddock, were either not surveyed or surveyed only along main roads in 2005, so many of current sites were likely missed.

Other possible reasons for discrepancies between the two surveys include the survey methods and technology used in each. In 2005, assessors were not employees of PA CleanWays or Allegheny CleanWays nor teamed with employees of either organization, so their experience at dump site assessment was limited. The technology used was also limited. All surveys in 2005 were done using maps (with some roads not marked), hand-held GPS devices, and paper forms.

Conversely, the current survey used tablets connected to the internet via a hotspot, enabling surveyors to have real-time location information and the ability to enter data on the spot.

Lastly, the 2005 survey looked only for sites that were visible from the public right-of-way and which appeared to be on public property. To get a more realistic picture of the state of land pollution caused by illegal dumping in Allegheny County, the current survey included (when possible) sites that were not initially visible from public roadways and that were on private property.

RECOMMENDATIONS

While systematic and cultural change is needed to fully address the problem of land pollution through illegal dumping, several tangible actions can be taken that could have an immediate positive impact on the amount of illegal dumping throughout Allegheny County.

Cleanup

Thoughtful and thorough cleaning of illegal dump sites, including removal of overgrown vegetation and improvement of the area around the site, is the first step in addressing the land pollution caused by illegal dumping. Specific action steps include:

- 1) Help Communities to find money to cover cleanup costs
 - a. As stated above, the estimated cost to clean up all the illegal dump sites in Allegheny County would be approximately **\$842,400**.
 - b. Additional funds should also be spent to remediate the immediate area near dumpsites, so that the site is no longer appealing to would-be dumpers. Tactics such as blocking off abandoned streets, keeping empty lots mowed, and making vacant buildings look tended are important in deterring dumping and should be part of the cleanup process.
- 2) Educate communities about the costs of NOT cleaning up illegal dump sites
 - a. Health costs – Dump sites inherently contain materials that could be health hazards or cause injury. They are also breeding grounds for disease and negatively affect the mental health of people who live near them.
 - b. Economic costs – Property values, economic development opportunities, and tax revenue are all negatively impacted by illegal dumping. Allowing illegal dumping to persist in a community could end up costing the community millions of dollars in lost revenue.
 - c. Environmental costs – While the full cost of illegal dumping to the environment has not been calculated, the harm to wildlife and the contamination of soil, groundwater, rivers, streams, and potentially air (through fire or other disturbance) is without doubt.

Prevention

Policy and procedural changes are imperative to preventing illegal dumping from happening in the first place. Below are a few important actions that need to happen to reduce illegal dumping in Allegheny County.

- 1) Support a State-wide Tire Manifest Program – With more than 27,000 tires found throughout Allegheny County, tires account for the most numerous single item illegally discarded. Even though recycling of tires has become easier and more convenient for individual car owners, the large tire piles found in several municipalities suggest that unscrupulous tire dealers and/or haulers are willing to pollute Allegheny County communities for the sake of saving a few thousand dollars. A tire manifest program, like that established in California, Texas, and South Carolina, monitors the transfer of tires from the point of generation to their end-use or final destination (e.g. recycling center, land fill, incinerator, etc.) and is critical in holding waste tire generators, haulers, and end-use facilities accountable for proper management of waste tires. The Allegheny County Health Department should take a lead role in working with county and state governments to make such a system a reality in Pennsylvania.
- 2) Develop an Integrated Waste Management Facility – Creating a one-stop waste disposal facility like that implemented by Lancaster County Solid Waste Authority would be an ideal, albeit costly, step to reducing illegal dumping in Allegheny County. While such a facility would not eliminate all illegal dumping, having at least a convenient and affordable drop-off center that would take most forms of residential waste, including e-waste and construction and demolition debris, would enable more people to properly handle hard-to-dispose-of items and discourage illegal dumping of those items.
- 3) Support Extended Producer Responsibility (EPR) for Recycling – supporting legislation that puts the burden of recycling costs on the manufacturers of products rather than the consumer or local government would go a long way in encouraging recycling and would reduce illegal dumping of items that cost money to recycle, such as electronics or tires.
- 4) Promote anti-litter, anti-dumping, and recycling education throughout the county –The following policies and procedures would help to improve the collective awareness of Allegheny County residents on the issues of litter and recycling.
 - a. Consistent recycling policies and messaging throughout the county.
 - b. Mandatory anti-litter and recycling education coupled with enforced mandatory recycling in all schools.
 - c. A land pollution campaign similar to that of air and water pollution - Allegheny County has a land pollution problem that can also contribute to water and air pollution. Making residents, including elected and appointed officials, aware of the problem, the impact of the problem to residents and communities throughout the county, and how to address the problem would help to improve their health and quality of life.

SUMMARY

Having identified 486 illegal dumpsites, totaling approximately 1,404 tons, in more than half of Allegheny County municipalities (not counting the City of Pittsburgh), this survey begins to illuminate the land pollution problem endemic to many communities in the county. Types of materials found most often at the sites; proximity of the sites to residences, greenspaces, and waterways; and the prevalence of dump sites in already environmentally vulnerable communities indicate that illegal dumping is a problem that has the potential for profound environmental, economic, and health implications in Allegheny County. Cleanup of the existing sites as well as actions to prevent additional dumping must take precedence in the coming decade. Addressing the land pollution problem with air and water pollution is critical for Allegheny County to completely shed its environmentally exploitive and industrial past and become a truly livable area for all residents.

Allegheny County Illegal Dumping **Site Characteristics** by Municipality

Municipality	Location	Area Type	Terrain Type	Distance from Waterway	Near Green Space	Nearest Residence
Aleppo	Redgate Road	Wooded Hillside	Moderately Sloped	No Waterway Nearby	Yes	Less than 100 Ft
Avalon	Norwood and City View	Wooded Hillside	Steeply Sloped	No Waterway Nearby	Yes	Less than 100 Ft
Baldwin	Wilson Drive	Wooded Hillside	Gently Sloped	No Waterway Nearby	Yes	Less than 100 Ft
Bell Acres	Sevin Road	Roadway	Steeply Sloped	Less than 50 Ft	No	.25 Miles - .5 Miles
Bellevue	Jackman Ave Below Bridge	Ravine	Steeply Sloped	More than 100 Ft	No	Less than 100 Ft
Bellevue	Maple Ave	Ravine	Extremely Sloped	Less than 50 Ft	No	Less than 100 Ft
Braddock	1st Street	Roadway	Flat	Less than 50 Ft	Yes	100 Ft - .25 Miles
Braddock	5th and Washington	Alley	Flat	Between 50-100 Ft	Yes	Less than 100 Ft
Braddock	9th Street	Alley	Flat	Between 50-100 Ft	Yes	Less than 100 Ft
Braddock	April Way	Alley	Flat	No Waterway Nearby	Yes	Less than 100 Ft
Braddock	Ash Street	Empty Lot	Flat	No Waterway Nearby	Yes	Less than 100 Ft
Braddock	Birch Road	Alley	Moderately Sloped	No Waterway Nearby	Yes	Less than 100 Ft
Braddock	Charles Way	Mixed	Moderately Sloped	No Waterway Nearby	Yes	100 Ft - .25 Miles
Braddock	Cherry and Washington	Alley	Flat	Between 50-100 Ft	Yes	Less than 100 Ft
Braddock	Cherry and Washington 2	Roadway	Flat	Between 50-100 Ft	Yes	Less than 100 Ft
Braddock	Cherry Way	Alley	Flat	No Waterway Nearby	Yes	Less than 100 Ft
Braddock	Cherry Way 2	Alley	Flat	More than 100 Ft	Yes	Less than 100 Ft
Braddock	Cherry Way 3	Alley	Flat	More than 100 Ft	Yes	Less than 100 Ft
Braddock	Corey Avenue	Empty Lot	Flat	No Waterway Nearby	Yes	Less than 100 Ft
Braddock	Grape Street	Alley	Flat	No Waterway Nearby	Yes	Less than 100 Ft
Braddock	Halket Street	Alley	Flat	More than 100 Ft	Yes	Less than 100 Ft

Allegheny County Dump Site Survey and Assessment
2017 Report

Municipality	Location	Area Type	Terrain Type	Distance from Waterway	Near Green Space	Nearest Residence
Braddock	Helena and 1st	Mixed	Flat	No Waterway Nearby	Yes	Less than 100 Ft
Braddock	Helena Street	Empty Lot	Moderately Sloped	No Waterway Nearby	Yes	Less than 100 Ft
Braddock	July Way	Alley	Flat	No Waterway Nearby	Yes	Less than 100 Ft
Braddock	Maple Way	Alley	Flat	No Waterway Nearby	Yes	Less than 100 Ft
Braddock	Maple Way 2	Alley	Flat	No Waterway Nearby	Yes	Less than 100 Ft
Braddock	May Way	Alley	Flat	No Waterway Nearby	Yes	Less than 100 Ft
Braddock	May Way 2	Alley	Flat	No Waterway Nearby	Yes	Less than 100 Ft
Braddock	Oliver Street	Alley	Flat	No Waterway Nearby	Yes	Less than 100 Ft
Braddock	Oliver Street 2	Alley	Flat	No Waterway Nearby	Yes	Less than 100 Ft
Braddock	Pine Way and Gate Street	Alley	Flat	More than 100 Ft	Yes	Less than 100 Ft
Braddock	Summit Street Lot	Empty Lot	Flat	No Waterway Nearby	Yes	Less than 100 Ft
Braddock	Union Street Alley	Abandoned Bldg	Flat	No Waterway Nearby	Yes	Less than 100 Ft
Braddock	Vine Street	Alley	Flat	No Waterway Nearby	Yes	Less than 100 Ft
Braddock	Washington and 9th	Alley	Flat	Between 50-100 Ft	Yes	Less than 100 Ft
Braddock	Washington and McCune	Alley	Flat	Between 50-100 Ft	Yes	100 Ft - .25 Miles
Braddock	Willow Way	Alley	Flat	More than 100 Ft	Yes	Less than 100 Ft
Braddock	Yew Street	Alley	Flat	No Waterway Nearby	Yes	Less than 100 Ft
Braddock Hills	Center Street	Waterway	Flat	Less than 50 Ft	Yes	Less than 100 Ft
Braddock Hills	Delaware Avenue	Wooded Hillside	Gently Sloped	No Waterway Nearby	Yes	Less than 100 Ft
Braddock Hills	Montana Ave 2	Wooded Hillside	Gently Sloped	No Waterway Nearby	Yes	Less than 100 Ft
Braddock Hills	Montana Avenue	Wooded Hillside	Moderately Sloped	No Waterway Nearby	Yes	Less than 100 Ft
Brentwood	Wanley Road	Waterway	Flat	Less than 50 Ft	Yes	100 Ft - .25 Miles
Bridgeville	Hickman Street	Roadway	Flat	No Waterway Nearby	Yes	.25 Miles - .5 Miles
Bridgeville	Union Street	Roadway	Moderately Sloped	More than 100 Ft	Yes	Less than 100 Ft
Carnegie	Run St.	Wooded Hillside	Moderately Sloped	Less than 50 Ft	Yes	Less than 100 Ft
Churchill	McCrady Road	Wooded Hillside	Steeply Sloped	Less than 50 Ft	Yes	.25 Miles - .5 Miles
Churchill	Rodi Road Churchill	Roadway	Flat	Less than 50 Ft	Yes	.25 Miles - .5 Miles
Clairton	Boundary Ave	Empty Lot	Flat	No Waterway Nearby	Yes	Less than 100 Ft

Allegheny County Dump Site Survey and Assessment
2017 Report

Municipality	Location	Area Type	Terrain Type	Distance from Waterway	Near Green Space	Nearest Residence
Clairton	Broadway Street	Roadway	Flat	No Waterway Nearby	Yes	Less than 100 Ft
Clairton	Coulson Avenue	Roadway	Flat	No Waterway Nearby	Yes	100 Ft - .25 Miles
Clairton	Linden Avenue	Roadway	Gently Sloped	No Waterway Nearby	Yes	Less than 100 Ft
Clairton	Miller Road	Roadway	Flat	More than 100 Ft	Yes	100 Ft - .25 Miles
Clairton	Ridge Avenue and Fifth	Ravine	Steeply Sloped	No Waterway Nearby	Yes	Less than 100 Ft
Clairton	Shaw Avenue	Empty Lot	Flat	No Waterway Nearby	Yes	Less than 100 Ft
Clairton	Spring Alley	Roadway	Flat	No Waterway Nearby	Yes	Less than 100 Ft
Clairton	Spring Alley 2	Wooded Hillside	Gently Sloped	No Waterway Nearby	Yes	Less than 100 Ft
Clairton	St. Clair Ravine	Ravine	Steeply Sloped	No Waterway Nearby	Yes	Less than 100 Ft
Clairton	Stewart Alley	Empty Lot	Flat	No Waterway Nearby	Yes	Less than 100 Ft
Clairton	Stewart and Locust	Alley	Flat	No Waterway Nearby	Yes	Less than 100 Ft
Clairton	Vankirk Alley	Wooded Hillside	Steeply Sloped	No Waterway Nearby	Yes	Less than 100 Ft
Clairton	Wabash Ave	Roadway	Flat	No Waterway Nearby	Yes	Less than 100 Ft
Clairton	Walnut Alley and Ridge Ave	Empty Lot	Flat	No Waterway Nearby	Yes	Less than 100 Ft
Collier	Baldwin Rd Ext	Ravine	Steeply Sloped	Less than 50 Ft	Yes	Less than 100 Ft
Collier	Fort Pitt Rd.	Roadway	Flat	No Waterway Nearby	Yes	.25 Miles - .5 Miles
Collier	Gregg Station Rd	Wooded Hillside	Moderately Sloped	No Waterway Nearby	Yes	Less than 100 Ft
Collier	Noblestown Rd Hairpin Turn	Ravine	Extremely Sloped	Less than 50 Ft	Yes	Less than 100 Ft
Collier	Thoms and Pinch	Waterway	Moderately Sloped	Less than 50 Ft	Yes	Less than 100 Ft
Collier	Thoms Run near Battle Ridge Rd	Roadway	Flat	No Waterway Nearby	Yes	Less than 100 Ft
Coraopolis	2nd and Main	Empty Lot	Flat	More than 100 Ft	Yes	Less than 100 Ft
Coraopolis	5th and Mulberry	Empty Lot	Flat	No Waterway Nearby	Yes	Less than 100 Ft
Coraopolis	Brook St	Wooded Hillside	Gently Sloped	Less than 50 Ft	Yes	.25 Miles - .5 Miles
Coraopolis	Brook St Parking Lot	Wooded Hillside	Moderately Sloped	Less than 50 Ft	Yes	.25 Miles - .5 Miles
Coraopolis	Elm Way	Alley	Flat	More than 100 Ft	No	Less than 100 Ft
Coraopolis	Petroleum Avenue	Ravine	Extremely Sloped	Less than 50 Ft	Yes	Less than 100 Ft
Crescent	Crescent Blvd and Osborne	Roadway	Gently Sloped	No Waterway Nearby	Yes	Less than 100 Ft
Crescent	School St	Empty Lot	Gently Sloped	More than 100 Ft	Yes	Less than 100 Ft

Allegheny County Dump Site Survey and Assessment
2017 Report

Municipality	Location	Area Type	Terrain Type	Distance from Waterway	Near Green Space	Nearest Residence
Crescent	Spring Run Road	Roadway	Gently Sloped	Between 50-100 Ft	Yes	Less than 100 Ft
Dravosburg	Curry Hollow Road	Roadway	Flat	More than 100 Ft	Yes	Less than 100 Ft
Dravosburg	Washington Avenue	Empty Lot	Flat	More than 100 Ft	Yes	100 Ft - .25 Miles
Duquesne	12 Viola Ave	Roadway	Flat	No Waterway Nearby	Yes	Less than 100 Ft
Duquesne	3rd Street	Roadway	Flat	No Waterway Nearby	No	Less than 100 Ft
Duquesne	Ash Alley	Alley	Flat	No Waterway Nearby	Yes	100 Ft - .25 Miles
Duquesne	Beech Alley	Abandoned Bldg	Flat	No Waterway Nearby	Yes	100 Ft - .25 Miles
Duquesne	Cedar Street	Empty Lot	Gently Sloped	No Waterway Nearby	No	Less than 100 Ft
Duquesne	Clark and Maple	Empty Lot	Flat	No Waterway Nearby	No	100 Ft - .25 Miles
Duquesne	Hamilton Street	Roadway	Gently Sloped	No Waterway Nearby	No	Less than 100 Ft
Duquesne	Hazel Alley	Alley	Flat	No Waterway Nearby	No	Less than 100 Ft
Duquesne	Hickory Alley	Alley	Flat	No Waterway Nearby	No	Less than 100 Ft
Duquesne	Hickory Alley South	Alley	Flat	No Waterway Nearby	No	Less than 100 Ft
Duquesne	Huckleberry and Edith	Abandoned Bldg	Flat	No Waterway Nearby	No	Less than 100 Ft
Duquesne	McKee Ave	Alley	Gently Sloped	No Waterway Nearby	Yes	Less than 100 Ft
Duquesne	Mulberry Alley	Abandoned Bldg	Flat	No Waterway Nearby	No	Less than 100 Ft
Duquesne	Mulberry and Fourth Field	Empty Lot	Flat	No Waterway Nearby	No	100 Ft - .25 Miles
Duquesne	Mulberry St Garage	Abandoned Bldg	Flat	No Waterway Nearby	No	Less than 100 Ft
Duquesne	Oak Alley	Alley	Flat	No Waterway Nearby	No	100 Ft - .25 Miles
Duquesne	Prune Alley Garage	Abandoned Bldg	Flat	No Waterway Nearby	No	Less than 100 Ft
Duquesne	Prune Alley middle	Alley	Flat	No Waterway Nearby	No	Less than 100 Ft
Duquesne	Prune and Oliver	Alley	Gently Sloped	No Waterway Nearby	No	Less than 100 Ft
Duquesne	Wood Al	Empty Lot	Flat	No Waterway Nearby	No	100 Ft - .25 Miles
East Pittsburgh	Main Street East Pittsburgh	Wooded Hillside	Steeply Sloped	No Waterway Nearby	Yes	.25 Miles - .5 Miles
East Pittsburgh	Westinghouse Floodgate	Abandoned Bldg	Flat	No Waterway Nearby	Yes	Less than 100 Ft
Elizabeth	Blythedale Park	Park	Flat	Less than 50 Ft	Yes	Less than 100 Ft
Elizabeth	Boston Hollow Road	Roadway	Gently Sloped	Less than 50 Ft	Yes	Less than 100 Ft
Elizabeth	Keddie Drive	Roadway	Moderately Sloped	Between 50-100 Ft	Yes	Less than 100 Ft

Allegheny County Dump Site Survey and Assessment
2017 Report

Municipality	Location	Area Type	Terrain Type	Distance from Waterway	Near Green Space	Nearest Residence
Elizabeth	Boyds Hollow Road	Roadway	Flat	Less than 50 Ft	Yes	Less than 100 Ft
Elizabeth	1025 Boyds Hollow Road	Roadway	Flat	No Waterway Nearby	Yes	Less than 100 Ft
Elizabeth	2010 Lovedale	Roadway	Mixed	Less than 50 Ft	Yes	Less than 100 Ft
Elizabeth	Blythdale Road	Roadway	Flat	No Waterway Nearby	Yes	Less than 100 Ft
Elizabeth	Long Hollow Road	Roadway	Steeply Sloped	Between 50-100 Ft	Yes	Less than 100 Ft
Elizabeth	Round Hill Road	Roadway	Steeply Sloped	Less than 50 Ft	Yes	Less than 100 Ft
Elizabeth	Forest Hill Rd/ Smithdale Road	Roadway	Flat	Between 50-100 Ft	Yes	Less than 100 Ft
Etna	Etna Industrial Street	Roadway	Flat	Less than 50 Ft	Yes	.25 Miles - .5 Miles
Etna	Finney Street Etna	Roadway	Flat	More than 100 Ft	No	Less than 100 Ft
Fawn Township	Metz Road	Roadway	Moderately Sloped	Less than 50 Ft	Yes	.25 Miles - .5 Miles
Findlay	Boundary / close to Clinton	Empty Lot	Flat	No Waterway Nearby	No	Less than 100 Ft
Findlay	Camp Meeting Road	Roadway	Gently Sloped	No Waterway Nearby	No	Less than 100 Ft
Findlay	Enlow Road	Greenway	Moderately Sloped	Less than 50 Ft	Yes	.25 Miles - .5 Miles
Findlay	Moon Clinton Road site 1	Roadway	Flat	Less than 50 Ft	Yes	Less than 100 Ft
Findlay	Moon Clinton Road site 2	Roadway	Flat	No Waterway Nearby	No	Less than 100 Ft
Findlay	Point Park Road	Roadway	Gently Sloped	No Waterway Nearby	Yes	Less than 100 Ft
Findlay	Potato Garden Road	Roadway	Flat	Less than 50 Ft	No	Less than 100 Ft
Findlay	Potato Garden/Burgettstown Rd	Roadway	Gently Sloped	More than 100 Ft	No	Less than 100 Ft
Findlay	Robinson Road	Roadway	Flat	Less than 50 Ft	Yes	Less than 100 Ft
Findlay	Spring Run Road Extension	Roadway	Flat	No Waterway Nearby	Yes	Less than 100 Ft
Findlay	Washington Road	Roadway	Gently Sloped	Less than 50 Ft	Yes	Less than 100 Ft
Forward	2001/ Bunola River Blvd Site 1	Roadway	Mixed	Less than 50 Ft	Yes	Less than 100 Ft
Forward	2001/ Bunola River Blvd Site 2	Roadway	Mixed	More than 100 Ft	Yes	Less than 100 Ft
Forward	2001/ Bunola River Blvd Site 3	Roadway	Gently Sloped	More than 100 Ft	Yes	Less than 100 Ft
Forward	2001/ Bunola River Blvd Site 4	Roadway	Flat	More than 100 Ft	Yes	Less than 100 Ft
Forward	Bunda River RR Site	Wooded Hillside	Steeply Sloped	Between 50-100 Ft	Yes	Less than 100 Ft
Forward	Elkhorn Ravine	Ravine	Extremely Sloped	No Waterway Nearby	Yes	Less than 100 Ft
Forward	Elkhorn Road site 1	Roadway	Moderately Sloped	No Waterway Nearby	Yes	Less than 100 Ft

Allegheny County Dump Site Survey and Assessment
2017 Report

Municipality	Location	Area Type	Terrain Type	Distance from Waterway	Near Green Space	Nearest Residence
Forward	Elkhorn Road site 2	Roadway	Steeply Sloped	Less than 50 Ft	Yes	Less than 100 Ft
Forward	Elkhorn Road site 3	Roadway	Flat	Less than 50 Ft	Yes	Less than 100 Ft
Forward	Ella Hollow Road	Empty Lot	Flat	No Waterway Nearby	Yes	Less than 100 Ft
Forward	Kelly Hollow	Roadway	Moderately Sloped	No Waterway Nearby	Yes	Less than 100 Ft
Forward	Kelly Hollow 2	Empty Lot	Flat	No Waterway Nearby	Yes	Less than 100 Ft
Forward	Kelly Hollow 3	Ravine	Moderately Sloped	Less than 50 Ft	Yes	Less than 100 Ft
Forward	Kelly Ravine	Wooded Hillside	Steeply Sloped	No Waterway Nearby	Yes	Less than 100 Ft
Forward	Mountaintop Lane	Empty Lot	Flat	Less than 50 Ft	Yes	Less than 100 Ft
Forward	Pangburn Hollow 1	Empty Lot	Flat	Less than 50 Ft	Yes	Less than 100 Ft
Forward	Pangburn Hollow 2	Empty Lot	Flat	Less than 50 Ft	Yes	Less than 100 Ft
Forward	Pangburn Hollow 3	Empty Lot	Flat	Less than 50 Ft	Yes	Less than 100 Ft
Forward	Raccoon Run 3	Roadway	Flat	Less than 50 Ft	Yes	Less than 100 Ft
Forward	Raccoon Run 4	Wooded Hillside	Gently Sloped	Less than 50 Ft	Yes	Less than 100 Ft
Forward	Raccoon Run Road / Bunola Blvd	Wooded Hillside	Extremely Sloped	Less than 50 Ft	Yes	Less than 100 Ft
Forward	Raccoon Run Road site 2	Roadway	Flat	Less than 50 Ft	Yes	Less than 100 Ft
Forward	Rainbow Run Road	Empty Lot	Gently Sloped	Less than 50 Ft	Yes	Less than 100 Ft
Forward	Riverview Road	Roadway	Moderately Sloped	Less than 50 Ft	Yes	Less than 100 Ft
Forward	Rostosky 2	Ravine	Moderately Sloped	No Waterway Nearby	Yes	Less than 100 Ft
Forward	Unknown	Roadway	Steeply Sloped	No Waterway Nearby	Yes	Less than 100 Ft
Forward	Williamsport Road	Roadway	Flat	No Waterway Nearby	Yes	Less than 100 Ft
Forward	Williamsport Road 2	Roadway	Flat	No Waterway Nearby	Yes	Less than 100 Ft
Glassport/Lincoln	Harrison Street	Wooded Hillside	Moderately Sloped	More than 100 Ft	Yes	Less than 100 Ft
Glassport/Lincoln	Oregon Street	Wooded Hillside	Steeply Sloped	No Waterway Nearby	Yes	Less than 100 Ft
Harrison Township	Karns Road	Greenway	Gently Sloped	Between 50-100 Ft	Yes	Less than 100 Ft
Harrison Township	River Road Natrona	Roadway	Steeply Sloped	Less than 50 Ft	Yes	100 Ft - .25 Miles
Homestead	224 Joseph St	Abandoned Bldg	Flat	No Waterway Nearby	No	Less than 100 Ft
Homestead	E. Pink Way	Empty Lot	Flat	No Waterway Nearby	Yes	Less than 100 Ft
Homestead	E. Plum Way	Empty Lot	Flat	No Waterway Nearby	No	Less than 100 Ft

Allegheny County Dump Site Survey and Assessment
2017 Report

Municipality	Location	Area Type	Terrain Type	Distance from Waterway	Near Green Space	Nearest Residence
Homestead	Pine Way	Abandoned Bldg	Flat	No Waterway Nearby	No	Less than 100 Ft
Homestead	Rose Way	Empty Lot	Flat	No Waterway Nearby	No	Less than 100 Ft
Homestead	W. Park Way	Empty Lot	Flat	More than 100 Ft	Yes	Less than 100 Ft
Homestead	West Oak Way	Alley	Flat	No Waterway Nearby	No	Less than 100 Ft
Homestead	West Pine Way	Abandoned Bldg	Flat	No Waterway Nearby	No	Less than 100 Ft
Indiana Township	Cove Run Road	Abandoned Bldg	Flat	No Waterway Nearby	Yes	.5 - 1 Miles
Jefferson Hills	Alice Mine Road	Abandoned Bldg	Flat	No Waterway Nearby	Yes	100 Ft - .25 Miles
Jefferson Hills	Coulson/Miller 2	Roadway	Flat	No Waterway Nearby	Yes	100 Ft - .25 Miles
Jefferson Hills	Gill Hall Road	Empty Lot	Flat	Between 50-100 Ft	Yes	100 Ft - .25 Miles
Jefferson Hills	Old Clairton	Wooded Hillside	Moderately Sloped	Less than 50 Ft	Yes	100 Ft - .25 Miles
Jefferson Hills	Wall Road site 1	Roadway	Flat	No Waterway Nearby	Yes	.25 Miles - .5 Miles
Kennedy Township	Creek St (Kennedy Twp)	Roadway	Flat	Less than 50 Ft	Yes	Less than 100 Ft
Kennedy Township	Forest Grove	Roadway	Moderately Sloped	No Waterway Nearby	Yes	Less than 100 Ft
Kennedy Township	Patterson Lane	Wooded Hillside	Steeply Sloped	No Waterway Nearby	Yes	.25 Miles - .5 Miles
Leetsdale	Avenue A	Roadway	Flat	Less than 50 Ft	Yes	.25 Miles - .5 Miles
Liberty	River Ridge Road	Wooded Hillside	Flat	Between 50-100 Ft	Yes	100 Ft - .25 Miles
Lincoln	Deer Lane	Wooded Hillside	Moderately Sloped	More than 100 Ft	Yes	Less than 100 Ft
Lincoln	Lincoln Boulevard	Roadway	Flat	Between 50-100 Ft	Yes	Less than 100 Ft
Marshall	Freeport Road Marshall Twp	Roadway	Flat	No Waterway Nearby	Yes	Less than 100 Ft
McKees Rocks	Robb St.	Empty Lot	Gently Sloped	More than 100 Ft	Yes	100 Ft - .25 Miles
McKees Rocks	Agnes	Roadway	Flat	Less than 50 Ft	No	Less than 100 Ft
McKees Rocks	Alexander Street	Wooded Hillside	Steeply Sloped	More than 100 Ft	Yes	Less than 100 Ft
McKees Rocks	Camp Street	Roadway	Flat	No Waterway Nearby	Yes	Less than 100 Ft
McKees Rocks	Davis Ave	Wooded Hillside	Extremely Sloped	More than 100 Ft	Yes	Less than 100 Ft
McKees Rocks	Davis Ave/Highland Ave Trail	Wooded Hillside	Flat	No Waterway Nearby	Yes	100 Ft - .25 Miles
McKees Rocks	Francis St	Alley	Flat	No Waterway Nearby	Yes	100 Ft - .25 Miles
McKees Rocks	Grant Street/Linden Ave	Mixed	Flat	More than 100 Ft	Yes	Less than 100 Ft
McKees Rocks	Irwin Street	Wooded Hillside	Moderately Sloped	More than 100 Ft	Yes	Less than 100 Ft

Allegheny County Dump Site Survey and Assessment
2017 Report

Municipality	Location	Area Type	Terrain Type	Distance from Waterway	Near Green Space	Nearest Residence
McKees Rocks	Linton Street	Ravine	Steeply Sloped	More than 100 Ft	Yes	100 Ft - .25 Miles
McKees Rocks	Marion St	Ravine	Moderately Sloped	More than 100 Ft	Yes	Less than 100 Ft
McKees Rocks	Metber Alley	Alley	Flat	More than 100 Ft	No	Less than 100 Ft
McKees Rocks	Owen St. and Chartiers Ave	Wooded Hillside	Extremely Sloped	Between 50-100 Ft	Yes	Less than 100 Ft
McKees Rocks	Penn Alley	Empty Lot	Flat	More than 100 Ft	Yes	Less than 100 Ft
McKees Rocks	Storpels Ally	Empty Lot	Flat	More than 100 Ft	Yes	Less than 100 Ft
McKeesport	2011 Riverview Street	Abandoned Bldg	Gently Sloped	More than 100 Ft	Yes	Less than 100 Ft
McKeesport	623 Fairview	Alley	Flat	No Waterway Nearby	Yes	Less than 100 Ft
McKeesport	836 Huey St.	Roadway	Flat	No Waterway Nearby	Yes	Less than 100 Ft
McKeesport	Alpine Alley	Abandoned Bldg	Flat	More than 100 Ft	Yes	Less than 100 Ft
McKeesport	Alpine Alley 2 near Cent. School	Abandoned Bldg	Flat	More than 100 Ft	Yes	100 Ft - .25 Miles
McKeesport	Bouquet Corner	Abandoned Bldg	Moderately Sloped	More than 100 Ft	Yes	Less than 100 Ft
McKeesport	Center Street (2118)	Roadway	Mixed	Between 50-100 Ft	Yes	100 Ft - .25 Miles
McKeesport	Clay Alley	Abandoned Bldg	Gently Sloped	More than 100 Ft	Yes	Less than 100 Ft
McKeesport	Clay Alley 2	Abandoned Bldg	Flat	More than 100 Ft	Yes	Less than 100 Ft
McKeesport	Clay Alley 3	Abandoned Bldg	Flat	More than 100 Ft	Yes	Less than 100 Ft
McKeesport	Colfax and Hazel	Abandoned Bldg	Moderately Sloped	More than 100 Ft	Yes	100 Ft - .25 Miles
McKeesport	Douglas Street	Trail	Flat	Less than 50 Ft	Yes	Less than 100 Ft
McKeesport	Enterprise Street	Abandoned Bldg	Flat	More than 100 Ft	Yes	Less than 100 Ft
McKeesport	Express Alley	Abandoned Bldg	Flat	More than 100 Ft	Yes	Less than 100 Ft
McKeesport	Express Alley 2	Abandoned Bldg	Flat	More than 100 Ft	Yes	Less than 100 Ft
McKeesport	Grant Street	Abandoned Bldg	Gently Sloped	More than 100 Ft	Yes	Less than 100 Ft
McKeesport	Gross Street	Abandoned Bldg	Flat	More than 100 Ft	Yes	Less than 100 Ft
McKeesport	Haw Alley 2	Abandoned Bldg	Flat	More than 100 Ft	Yes	Less than 100 Ft
McKeesport	Haw Alley and Wall Alley	Empty Lot	Flat	More than 100 Ft	Yes	Less than 100 Ft
McKeesport	Jenny Lind Street	Empty Lot	Gently Sloped	More than 100 Ft	Yes	Less than 100 Ft
McKeesport	John Street	Wooded Hillside	Flat	More than 100 Ft	Yes	Less than 100 Ft
McKeesport	Juanita	Abandoned Bldg	Steeply Sloped	More than 100 Ft	Yes	100 Ft - .25 Miles

Allegheny County Dump Site Survey and Assessment
2017 Report

Municipality	Location	Area Type	Terrain Type	Distance from Waterway	Near Green Space	Nearest Residence
McKeesport	Lesue Alley	Abandoned Bldg	Gently Sloped	More than 100 Ft	Yes	Less than 100 Ft
McKeesport	Lesue Alley 3	Abandoned Bldg	Flat	More than 100 Ft	Yes	Less than 100 Ft
McKeesport	Lesue Alley2	Abandoned Bldg	Flat	No Waterway Nearby	Yes	Less than 100 Ft
McKeesport	Lincoln St dead end	Roadway	Flat	No Waterway Nearby	Yes	Less than 100 Ft
McKeesport	Locust St.	Abandoned Bldg	Flat	More than 100 Ft	Yes	Less than 100 Ft
McKeesport	Logan Alley	Alley	Flat	No Waterway Nearby	Yes	Less than 100 Ft
McKeesport	Martha Alley	Abandoned Bldg	Flat	No Waterway Nearby	No	Less than 100 Ft
McKeesport	Martin and Brisbane St	Abandoned Bldg	Flat	No Waterway Nearby	No	100 Ft - .25 Miles
McKeesport	Martin and Lawndale Garage	Abandoned Bldg	Flat	No Waterway Nearby	No	Less than 100 Ft
McKeesport	Martin bet. Colfax and Versailles	Roadway	Flat	No Waterway Nearby	No	Less than 100 Ft
McKeesport	Monterey Street	Roadway	Flat	No Waterway Nearby	Yes	Less than 100 Ft
McKeesport	Olive and Lincoln St	Empty Lot	Flat	No Waterway Nearby	Yes	Less than 100 Ft
McKeesport	Palmer Street and 16th	Wooded Hillside	Steeply Sloped	More than 100 Ft	Yes	.25 Miles - .5 Miles
McKeesport	Ravine and White Street	Abandoned Bldg	Gently Sloped	No Waterway Nearby	Yes	Less than 100 Ft
McKeesport	Ravine Street	Ravine	Steeply Sloped	No Waterway Nearby	Yes	100 Ft - .25 Miles
McKeesport	Ridge and Colfax	Abandoned Bldg	Steeply Sloped	No Waterway Nearby	Yes	Less than 100 Ft
McKeesport	Romine Avenue	Wooded Hillside	Steeply Sloped	More than 100 Ft	Yes	Less than 100 Ft
McKeesport	Spring Street	Wooded Hillside	Steeply Sloped	More than 100 Ft	Yes	Less than 100 Ft
McKeesport	Stone Alley	Roadway	Flat	No Waterway Nearby	Yes	Less than 100 Ft
McKeesport	Tube Works Alley	Abandoned Bldg	Flat	More than 100 Ft	Yes	Less than 100 Ft
McKeesport	Tube Works Alley dead-end	Wooded Hillside	Moderately Sloped	More than 100 Ft	Yes	100 Ft - .25 Miles
McKeesport	Tube Works Alley near 11 St.	Alley	Flat	More than 100 Ft	Yes	Less than 100 Ft
McKeesport	Tube Works Alley near 13 St.	Alley	Flat	More than 100 Ft	Yes	Less than 100 Ft
McKeesport	White Street	Wooded Hillside	Moderately Sloped	More than 100 Ft	Yes	100 Ft - .25 Miles
McKeesport	Willow and Grant	Abandoned Bldg	Flat	More than 100 Ft	Yes	100 Ft - .25 Miles
McKeesport	Wisp Alley	Abandoned Bldg	Flat	More than 100 Ft	Yes	Less than 100 Ft
Monroeville	Old Frankstown/ 286 W	Alley	Flat	Less than 50 Ft	Yes	More than 1 Mile
Monroeville	Pitcairn Rd and Stroschein Road	Waterway	Moderately Sloped	Between 50-100 Ft	Yes	.25 Miles - .5 Miles

Allegheny County Dump Site Survey and Assessment
2017 Report

Municipality	Location	Area Type	Terrain Type	Distance from Waterway	Near Green Space	Nearest Residence
Monroeville	Pitcairn Road	Roadway	Gently Sloped	Less than 50 Ft	Yes	.25 Miles - .5 Miles
Monroeville	Old William Penn	Wooded Hillside	Steeply Sloped	No Waterway Nearby	Yes	.25 Miles - .5 Miles
Monroeville	Sunset	Roadway	Moderately Sloped	No Waterway Nearby	Yes	Less than 100 Ft
Monroeville	Taylor Street Monroeville	Roadway	Mixed	No Waterway Nearby	Yes	Less than 100 Ft
Moon Twp.	Hirshinger Road	Empty Lot	Flat	No Waterway Nearby	Yes	More than 1 Mile
Moon Twp.	Hookstown Grade /Beaver Rd	Roadway	Flat	Less than 50 Ft	Yes	100 Ft - .25 Miles
Moon Twp.	Old Thorn Run Road	Empty Lot	Moderately Sloped	No Waterway Nearby	Yes	100 Ft - .25 Miles
Moon Twp.	Thorn Run and Old Thorn Run	Wooded Hillside	Steeply Sloped	No Waterway Nearby	Yes	Less than 100 Ft
Mt. Oliver	Transvers and Lacona Valley	Ravine	Steeply Sloped	No Waterway Nearby	Yes	Less than 100 Ft
Munhall	Hazel and Gold	Abandoned Bldg	Flat	No Waterway Nearby	No	Less than 100 Ft
Munhall	Creek St (Munhall)	Empty Lot	Flat	Less than 50 Ft	Yes	Less than 100 Ft
Munhall	Hickory and Andrew	Ravine	Extremely Sloped	Less than 50 Ft	Yes	Less than 100 Ft
Munhall	Walnut Way	Alley	Flat	No Waterway Nearby	No	Less than 100 Ft
North Braddock	2nd and Hawkins	Mixed	Gently Sloped	No Waterway Nearby	Yes	Less than 100 Ft
North Braddock	Bessemer Street	Wooded Hillside	Moderately Sloped	No Waterway Nearby	Yes	100 Ft - .25 Miles
North Braddock	Cherry Way North Braddock	Roadway	Gently Sloped	No Waterway Nearby	Yes	Less than 100 Ft
North Braddock	Cliff Street	Abandoned Bldg	Flat	No Waterway Nearby	Yes	Less than 100 Ft
North Braddock	Grove Avenue	Alley	Gently Sloped	No Waterway Nearby	Yes	Less than 100 Ft
North Braddock	Hope Street	Roadway	Flat	No Waterway Nearby	Yes	100 Ft - .25 Miles
North Braddock	Juno Way	Roadway	Flat	No Waterway Nearby	Yes	Less than 100 Ft
North Braddock	Margaret Way	Roadway	Flat	No Waterway Nearby	Yes	Less than 100 Ft
North Braddock	McCrea Way	Roadway	Flat	No Waterway Nearby	Yes	Less than 100 Ft
North Braddock	Orchard Way	Alley	Flat	No Waterway Nearby	Yes	Less than 100 Ft
North Braddock	Reeves Street	Alley	Flat	No Waterway Nearby	No	Less than 100 Ft
North Braddock	Reeves Street 2	Alley	Flat	No Waterway Nearby	No	Less than 100 Ft
North Braddock	Reeves Way	Roadway	Flat	No Waterway Nearby	Yes	Less than 100 Ft
North Braddock	Roy Street	Wooded Hillside	Gently Sloped	No Waterway Nearby	Yes	100 Ft - .25 Miles
North Braddock	Spring Street North Braddock	Roadway	Gently Sloped	No Waterway Nearby	Yes	100 Ft - .25 Miles

Allegheny County Dump Site Survey and Assessment
2017 Report

Municipality	Location	Area Type	Terrain Type	Distance from Waterway	Near Green Space	Nearest Residence
North Braddock	Sylvan Avenue	Roadway	Flat	No Waterway Nearby	Yes	100 Ft - .25 Miles
North Braddock	Violet Way and Shannon Ave	Wooded Hillside	Gently Sloped	No Waterway Nearby	Yes	Less than 100 Ft
North Braddock	Yost Blvd / 6th Street	Abandoned Bldg	Flat	No Waterway Nearby	Yes	Less than 100 Ft
North Fayette	Donaldson Rd	Abandoned Bldg	Gently Sloped	Less than 50 Ft	Yes	100 Ft - .25 Miles
North Fayette	Gamble Road	Empty Lot	Flat	No Waterway Nearby	Yes	100 Ft - .25 Miles
North Fayette	Mahoney Road by Hawthorne	Wooded Hillside	Moderately Sloped	No Waterway Nearby	Yes	Less than 100 Ft
North Fayette	N Star Rd 1	Empty Lot	Flat	Less than 50 Ft	Yes	Less than 100 Ft
North Fayette	N Star Rd 2	Abandoned Bldg	Flat	Less than 50 Ft	Yes	100 Ft - .25 Miles
North Fayette	N Star Rd 3	Wooded Hillside	Gently Sloped	Between 50-100 Ft	Yes	100 Ft - .25 Miles
North Fayette	Noble St	Abandoned Bldg	Flat	No Waterway Nearby	Yes	Less than 100 Ft
North Fayette	Noblestown Road	Roadway	Flat	No Waterway Nearby	Yes	Less than 100 Ft
North Fayette	Short Street	Roadway	Flat	Less than 50 Ft	Yes	Less than 100 Ft
North Fayette	Stewart/Elliots Road	Greenway	Moderately Sloped	Less than 50 Ft	Yes	100 Ft - .25 Miles
North Versailles	Westinghouse Ave	Wooded Hillside	Flat	No Waterway Nearby	Yes	Less than 100 Ft
North Versailles	Crestas Avenue	Empty Lot	Flat	No Waterway Nearby	Yes	Less than 100 Ft
North Versailles	Hoffman Road	Wooded Hillside	Steeply Sloped	Between 50-100 Ft	Yes	100 Ft - .25 Miles
North Versailles	Milligan Avenue	Roadway	Flat	No Waterway Nearby	Yes	Less than 100 Ft
North Versailles	Oakdale Road	Wooded Hillside	Moderately Sloped	More than 100 Ft	Yes	Less than 100 Ft
North Versailles	Osborne Street	Wooded Hillside	Steeply Sloped	Between 50-100 Ft	Yes	100 Ft - .25 Miles
North Versailles	Palma Street	Roadway	Flat	More than 100 Ft	Yes	Less than 100 Ft
North Versailles	Turner Street	Wooded Hillside	Moderately Sloped	No Waterway Nearby	Yes	Less than 100 Ft
North Versailles	1st and Markle	Roadway	Flat	No Waterway Nearby	Yes	Less than 100 Ft
North Versailles	Homer Avenue	Empty Lot	Flat	No Waterway Nearby	Yes	Less than 100 Ft
North Versailles	Hyer Avenue	Wooded Hillside	Steeply Sloped	No Waterway Nearby	Yes	Less than 100 Ft
North Versailles	Markle Street	Wooded Hillside	Moderately Sloped	No Waterway Nearby	Yes	Less than 100 Ft
Ohio Township	Roosevelt Road	Wooded Hillside	Steeply Sloped	No Waterway Nearby	Yes	Less than 100 Ft
Penn Hills	110 Everett	Empty Lot	Flat	No Waterway Nearby	No	Less than 100 Ft
Penn Hills	3rd and Hudson	Ravine	Steeply Sloped	Less than 50 Ft	No	Less than 100 Ft

Allegheny County Dump Site Survey and Assessment
2017 Report

Municipality	Location	Area Type	Terrain Type	Distance from Waterway	Near Green Space	Nearest Residence
Penn Hills	7229 Lawton St.	Abandoned Bldg	Flat	No Waterway Nearby	No	Less than 100 Ft
Penn Hills	7922 Lincoln Rd.	Ravine	Steeply Sloped	Between 50-100 Ft	No	Less than 100 Ft
Penn Hills	8336 Perchment St.	Roadway	Flat	No Waterway Nearby	No	Less than 100 Ft
Penn Hills	8888 Westwood Rd.	Empty Lot	Moderately Sloped	No Waterway Nearby	No	Less than 100 Ft
Penn Hills	Bunny Way	Alley	Gently Sloped	No Waterway Nearby	No	Less than 100 Ft
Penn Hills	Burton Drive	Roadway	Moderately Sloped	No Waterway Nearby	Yes	100 Ft - .25 Miles
Penn Hills	Caryl Road	Waterway	Gently Sloped	Less than 50 Ft	Yes	Less than 100 Ft
Penn Hills	Central and Manilla	Roadway	Gently Sloped	No Waterway Nearby	Yes	Less than 100 Ft
Penn Hills	Cushing St.	Roadway	Flat	No Waterway Nearby	Yes	Less than 100 Ft
Penn Hills	Dersam St.	Roadway	Flat	No Waterway Nearby	Yes	Less than 100 Ft
Penn Hills	E. Hill Rd.	Roadway	Moderately Sloped	No Waterway Nearby	No	Less than 100 Ft
Penn Hills	E. Lemington Rd.	Roadway	Flat	No Waterway Nearby	No	Less than 100 Ft
Penn Hills	Elk Rd.	Roadway	Gently Sloped	No Waterway Nearby	No	Less than 100 Ft
Penn Hills	Emerson St and Tremont Street	Wooded Hillside	Mixed	No Waterway Nearby	Yes	Less than 100 Ft
Penn Hills	Evaline Street	Wooded Hillside	Moderately Sloped	No Waterway Nearby	Yes	Less than 100 Ft
Penn Hills	Ferndale and Lawndale	Wooded Hillside	Gently Sloped	No Waterway Nearby	No	Less than 100 Ft
Penn Hills	Funston and Runnette	Wooded Hillside	Flat	No Waterway Nearby	No	Less than 100 Ft
Penn Hills	Golden Rod Way	Wooded Hillside	Moderately Sloped	No Waterway Nearby	No	Less than 100 Ft
Penn Hills	Harvard and Parkridge	Ravine	Moderately Sloped	No Waterway Nearby	No	Less than 100 Ft
Penn Hills	Hilda and Manilla	Wooded Hillside	Moderately Sloped	No Waterway Nearby	No	Less than 100 Ft
Penn Hills	Hochberg Road	Roadway	Flat	No Waterway Nearby	Yes	Less than 100 Ft
Penn Hills	Hunter Road	Roadway	Steeply Sloped	No Waterway Nearby	Yes	Less than 100 Ft
Penn Hills	Hunter Road 2	Wooded Hillside	Steeply Sloped	No Waterway Nearby	Yes	100 Ft - .25 Miles
Penn Hills	Ildewood Rd	Roadway	Flat	More than 100 Ft	No	Less than 100 Ft
Penn Hills	Indian Creek Road	Ravine	Steeply Sloped	Less than 50 Ft	Yes	Less than 100 Ft
Penn Hills	Indiana Road	Roadway	Gently Sloped	Less than 50 Ft	Yes	.25 Miles - .5 Miles
Penn Hills	Johnston Road	Roadway	Gently Sloped	No Waterway Nearby	Yes	Less than 100 Ft
Penn Hills	Locust St.	Wooded Hillside	Gently Sloped	No Waterway Nearby	No	Less than 100 Ft

Allegheny County Dump Site Survey and Assessment
2017 Report

Municipality	Location	Area Type	Terrain Type	Distance from Waterway	Near Green Space	Nearest Residence
Penn Hills	Lott Rd.	Roadway	Flat	No Waterway Nearby	Yes	.25 Miles - .5 Miles
Penn Hills	Mohler St.	Roadway	Flat	No Waterway Nearby	Yes	Less than 100 Ft
Penn Hills	Nadine and Lincoln	Greenway	Flat	No Waterway Nearby	Yes	Less than 100 Ft
Penn Hills	Orlan Pl.	Empty Lot	Flat	No Waterway Nearby	No	Less than 100 Ft
Penn Hills	Pear Alley	Roadway	Flat	No Waterway Nearby	No	Less than 100 Ft
Penn Hills	Pershing St.	Mixed	Gently Sloped	No Waterway Nearby	No	Less than 100 Ft
Penn Hills	Reiter Rd.	Roadway	Flat	No Waterway Nearby	No	Less than 100 Ft
Penn Hills	Ross Rd.	Roadway	Gently Sloped	No Waterway Nearby	Yes	Less than 100 Ft
Penn Hills	Schley St.	Roadway	Flat	No Waterway Nearby	No	Less than 100 Ft
Penn Hills	Standard and Hansel	Roadway	Flat	No Waterway Nearby	No	100 Ft - .25 Miles
Penn Hills	Teirs St.	Roadway	Flat	No Waterway Nearby	Yes	Less than 100 Ft
Penn Hills	Velte St.	Roadway	Flat	No Waterway Nearby	No	Less than 100 Ft
Penn Hills	Verona Road	Wooded Hillside	Steeply Sloped	Between 50-100 Ft	Yes	Less than 100 Ft
Pitcairn	130 E	Wooded Hillside	Gently Sloped	More than 100 Ft	Yes	Less than 100 Ft
Plum Borough	Barnett / Pine Street	Roadway	Flat	No Waterway Nearby	Yes	Less than 100 Ft
Plum Borough	Browntown and Zandona	Roadway	Flat	No Waterway Nearby	No	Less than 100 Ft
Plum Borough	Clements Rd.	Roadway	Flat	Less than 50 Ft	Yes	Less than 100 Ft
Plum Borough	Columbia Rd.	Roadway	Flat	No Waterway Nearby	No	Less than 100 Ft
Plum Borough	Fiesta Dr.	Wooded Hillside	Extremely Sloped	No Waterway Nearby	Yes	Less than 100 Ft
Plum Borough	Kane Rd.	Roadway	Steeply Sloped	No Waterway Nearby	Yes	100 Ft - .25 Miles
Plum Borough	Logan's Ferry	Abandoned Bldg	Flat	No Waterway Nearby	No	Less than 100 Ft
Plum Borough	Logan's Ferry and Browntown	Abandoned Bldg	Flat	No Waterway Nearby	No	Less than 100 Ft
Plum Borough	Pierson #1	Roadway	Steeply Sloped	Less than 50 Ft	Yes	Less than 100 Ft
Plum Borough	Pierson #2	Roadway	Steeply Sloped	Less than 50 Ft	Yes	Less than 100 Ft
Plum Borough	Walnut St.	Roadway	Moderately Sloped	No Waterway Nearby	Yes	Less than 100 Ft
Plum Borough	Webster Rd.	Wooded Hillside	Steeply Sloped	No Waterway Nearby	Yes	Less than 100 Ft
Port Vue	Grandview Drive Alley	Empty Lot	Flat	More than 100 Ft	Yes	Less than 100 Ft
Port Vue	McClure Drive	Wooded Hillside	Flat	No Waterway Nearby	Yes	100 Ft - .25 Miles

Allegheny County Dump Site Survey and Assessment
2017 Report

Municipality	Location	Area Type	Terrain Type	Distance from Waterway	Near Green Space	Nearest Residence
Port Vue	Port Vue Avenue	Wooded Hillside	Extremely Sloped	More than 100 Ft	Yes	Less than 100 Ft
Rankin	Holland Ave	Abandoned Bldg	Flat	No Waterway Nearby	Yes	Less than 100 Ft
Rankin	North Holland	Abandoned Bldg	Flat	No Waterway Nearby	Yes	Less than 100 Ft
Rankin	Pattison Ave	Roadway	Flat	No Waterway Nearby	Yes	Less than 100 Ft
Rankin	Winter Alley	Wooded Hillside	Gently Sloped	No Waterway Nearby	Yes	Less than 100 Ft
Robinson	N Petrie Road	Roadway	Steeply Sloped	More than 100 Ft	Yes	100 Ft - .25 Miles
Robinson	Station Street	Roadway	Flat	Less than 50 Ft	Yes	.25 Miles - .5 Miles
Robinson	Station Street (Robinson) 2	Empty Lot	Flat	Between 50-100 Ft	Yes	.25 Miles - .5 Miles
Robinson	Station Street (Robinson) 3	Abandoned Bldg	Flat	No Waterway Nearby	Yes	100 Ft - .25 Miles
Ross	111 Spruce Valley Dr.	Wooded Hillside	Flat	More than 100 Ft	Yes	Less than 100 Ft
Ross	549 Jacks Run	Ravine	Extremely Sloped	Less than 50 Ft	No	Less than 100 Ft
Ross	Forest and Center near 279	Wooded Hillside	Flat	Less than 50 Ft	Yes	Less than 100 Ft
Ross	Klemont Ave	Roadway	Steeply Sloped	No Waterway Nearby	Yes	Less than 100 Ft
Ross	Old English and Rochester	Roadway	Flat	Less than 50 Ft	Yes	100 Ft - .25 Miles
Ross	William St. Ross Twp.	Wooded Hillside	Flat	Between 50-100 Ft	Yes	Less than 100 Ft
Scott Township	Braun Way	Roadway	Flat	No Waterway Nearby	Yes	Less than 100 Ft
Scott Township	Boroview	Wooded Hillside	Extremely Sloped	Less than 50 Ft	Yes	Less than 100 Ft
Scott Township	Keystone Drive	Abandoned Bldg	Flat	Between 50-100 Ft	No	100 Ft - .25 Miles
Shaler	Craft Avenue Shaler	Wooded Hillside	Steeply Sloped	No Waterway Nearby	Yes	100 Ft - .25 Miles
Shaler	Little Pine Creek	Roadway	Flat	Less than 50 Ft	Yes	100 Ft - .25 Miles
Shaler	Newland Ln	Empty Lot	Flat	More than 100 Ft	Yes	Less than 100 Ft
Shaler	Saint Peter Street	Wooded Hillside	Gently Sloped	More than 100 Ft	Yes	Less than 100 Ft
South Fayette	Bowman Road Site 2	Roadway	Gently Sloped	No Waterway Nearby	Yes	.5 - 1 Miles
South Fayette	Cecil Reissing Road	Roadway	Flat	No Waterway Nearby	Yes	.5 - 1 Miles
South Fayette	Cecil Reissing Road Site 2	Wooded Hillside	Moderately Sloped	No Waterway Nearby	Yes	100 Ft - .25 Miles
South Fayette	Cecil-Sturgeon Rd 1	Roadway	Flat	No Waterway Nearby	Yes	More than 1 Mile
South Fayette	Cecil-Sturgeon Rd 2	Wooded Hillside	Gently Sloped	No Waterway Nearby	Yes	.25 Miles - .5 Miles
South Fayette	Coal Pit Run Road Site 1	Wooded Hillside	Moderately Sloped	No Waterway Nearby	Yes	.5 - 1 Miles

Allegheny County Dump Site Survey and Assessment
2017 Report

Municipality	Location	Area Type	Terrain Type	Distance from Waterway	Near Green Space	Nearest Residence
South Fayette	Hickory Grade Road	Wooded Hillside	Steeply Sloped	No Waterway Nearby	Yes	.25 Miles - .5 Miles
South Fayette	Laurel Hill Rd 2	Wooded Hillside	Moderately Sloped	No Waterway Nearby	Yes	100 Ft - .25 Miles
South Fayette	Laurel Hill Road 1	Wooded Hillside	Moderately Sloped	No Waterway Nearby	Yes	Less than 100 Ft
South Fayette	Millers Run Rd	Roadway	Flat	Less than 50 Ft	Yes	.25 Miles - .5 Miles
South Fayette	Robinson Road Pullout	Wooded Hillside	Steeply Sloped	No Waterway Nearby	Yes	100 Ft - .25 Miles
South Fayette	Sygan Road	Wooded Hillside	Gently Sloped	Less than 50 Ft	Yes	100 Ft - .25 Miles
South Park	Piney Fork Road	Roadway	Flat	Less than 50 Ft	Yes	Less than 100 Ft
South Versailles	Coulterville Road	Roadway	Flat	No Waterway Nearby	Yes	100 Ft - .25 Miles
Springdale	Butler Street	Roadway	Flat	Less than 50 Ft	Yes	100 Ft - .25 Miles
Stowe Township	Davis Ave above Stowe	Wooded Hillside	Steeply Sloped	More than 100 Ft	Yes	100 Ft - .25 Miles
Stowe Township	Gordon Aly	Empty Lot	Flat	No Waterway Nearby	No	Less than 100 Ft
Stowe Township	Penn Alley and 5th	Empty Lot	Flat	No Waterway Nearby	No	Less than 100 Ft
Stowe Township	Reed Alley	Abandoned Bldg	Flat	More than 100 Ft	No	Less than 100 Ft
Stowe Township	Ridge Ave	Wooded Hillside	Moderately Sloped	No Waterway Nearby	Yes	100 Ft - .25 Miles
Stowe Township	Shaffer Alley	Abandoned Bldg	Flat	More than 100 Ft	Yes	Less than 100 Ft
Stowe Township	Federal St bet 5th and 6th Street	Empty Lot	Flat	No Waterway Nearby	Yes	Less than 100 Ft
Stowe Township	Stowe Ave Ext.	Wooded Hillside	Steeply Sloped	More than 100 Ft	Yes	.25 Miles - .5 Miles
Stowe Township	Wilcrist Alley	Alley	Flat	No Waterway Nearby	No	Less than 100 Ft
Swissvale	Arthur Street Loop	Greenway	Moderately Sloped	No Waterway Nearby	Yes	Less than 100 Ft
Swissvale	Collingwood Ave	Wooded Hillside	Mixed	No Waterway Nearby	Yes	Less than 100 Ft
Swissvale	Corey Street	Wooded Hillside	Moderately Sloped	No Waterway Nearby	Yes	Less than 100 Ft
Swissvale	Lafayette St and Florence Ave	Wooded Hillside	Moderately Sloped	No Waterway Nearby	Yes	Less than 100 Ft
Swissvale	Short Street and Woodstock Ave	Abandoned Bldg	Flat	No Waterway Nearby	No	Less than 100 Ft
Tarentum	Sun Mine Road	Mixed	Mixed	More than 100 Ft	Yes	.25 Miles - .5 Miles
Turtle Creek	Fairview Avenue	Empty Lot	Flat	No Waterway Nearby	Yes	Less than 100 Ft
Turtle Creek	Mortimer Avenue	Empty Lot	Moderately Sloped	No Waterway Nearby	Yes	Less than 100 Ft
Turtle Creek	Mortimer Avenue 2	Roadway	Flat	No Waterway Nearby	Yes	100 Ft - .25 Miles
Versailles	Harphen Street	Roadway	Steeply Sloped	More than 100 Ft	Yes	Less than 100 Ft

Allegheny County Dump Site Survey and Assessment
2017 Report

Municipality	Location	Area Type	Terrain Type	Distance from Waterway	Near Green Space	Nearest Residence
Versailles	Long Run	Ravine	Steeply Sloped	Less than 50 Ft	Yes	100 Ft - .25 Miles
West Deer Twp	Benjamin St and Bessemer St	Wooded Hillside	Moderately Sloped	Less than 50 Ft	Yes	Less than 100 Ft
West Elizabeth	State Street	Wooded Hillside	Flat	More than 100 Ft	Yes	Less than 100 Ft
West Mifflin	327 Coal Rd Ext.	Wooded Hillside	Moderately Sloped	Less than 50 Ft	Yes	Less than 100 Ft
West Mifflin	Grant Ave Ext under Homeville	Wooded Hillside	Moderately Sloped	Between 50-100 Ft	Yes	Less than 100 Ft
West Mifflin	Homestead Duquesne Rd	Wooded Hillside	Flat	No Waterway Nearby	Yes	Less than 100 Ft
West Mifflin	Lebanon School Road	Roadway	Flat	No Waterway Nearby	Yes	Less than 100 Ft
West Mifflin	Lower Bull Run Road	Wooded Hillside	Gently Sloped	Less than 50 Ft	Yes	Less than 100 Ft
West Mifflin	New England Road 2	Wooded Hillside	Moderately Sloped	Less than 50 Ft	Yes	Less than 100 Ft
West Mifflin	New England Road 3	Empty Lot	Flat	Less than 50 Ft	Yes	Less than 100 Ft
West Mifflin	Oak Street dead end	Wooded Hillside	Flat	More than 100 Ft	Yes	Less than 100 Ft
West Mifflin	Short Street dead end	Wooded Hillside	Gently Sloped	More than 100 Ft	Yes	100 Ft - .25 Miles
West Mifflin	Smith Lane	Ravine	Flat	No Waterway Nearby	No	Less than 100 Ft
West Mifflin	Spring Street and Greensprings	Empty Lot	Flat	No Waterway Nearby	Yes	Less than 100 Ft
West Mifflin	St. Agnes and Bull Run Rd.	Wooded Hillside	Gently Sloped	Between 50-100 Ft	Yes	Less than 100 Ft
West Mifflin	Village lane	Empty Lot	Flat	No Waterway Nearby	Yes	Less than 100 Ft
West Homestead	203 Grandview Blvd	Abandoned Bldg	Flat	No Waterway Nearby	No	100 Ft - .25 Miles
Whitaker	Sherman	Ravine	Steeply Sloped	More than 100 Ft	Yes	100 Ft - .25 Miles
White Oak	Clinton Street	Empty Lot	Flat	No Waterway Nearby	Yes	Less than 100 Ft
White Oak	Delaware Street	Empty Lot	Flat	No Waterway Nearby	Yes	Less than 100 Ft
White Oak	Done and Navy Street	Wooded Hillside	Flat	No Waterway Nearby	Yes	Less than 100 Ft
White Oak	Heckman and McKee	Wooded Hillside	Flat	Less than 50 Ft	Yes	Less than 100 Ft
White Oak	Lower Heckman Road	Wooded Hillside	Steeply Sloped	Less than 50 Ft	Yes	Less than 100 Ft
White Oak	McClintock Rd	Roadway	Moderately Sloped	No Waterway Nearby	Yes	Less than 100 Ft
White Oak	Osbourne and Public	Roadway	Flat	No Waterway Nearby	Yes	Less than 100 Ft
White Oak	PA Ave under Congress	Ravine	Moderately Sloped	No Waterway Nearby	Yes	Less than 100 Ft
White Oak	Staisey Street	Empty Lot	Flat	No Waterway Nearby	Yes	Less than 100 Ft
White Oak	Stewartsville Hollow Road Site 2	Roadway	Flat	Less than 50 Ft	Yes	100 Ft - .25 Miles

Allegheny County Dump Site Survey and Assessment
2017 Report

Municipality	Location	Area Type	Terrain Type	Distance from Waterway	Near Green Space	Nearest Residence
Wilkins	Quarry and Barbour	Roadway	Flat	No Waterway Nearby	Yes	Less than 100 Ft
Wilkins	Quarry Street	Empty Lot	Flat	No Waterway Nearby	Yes	Less than 100 Ft
Wilkins	Rodi Road	Wooded Hillside	Moderately Sloped	More than 100 Ft	Yes	Less than 100 Ft
Wilkins	Rodi Road 2	Wooded Hillside	Flat	No Waterway Nearby	Yes	Less than 100 Ft
Wilkins	Thompson Run Road 2	Roadway	Flat	More than 100 Ft	Yes	Less than 100 Ft
Wilkinsburg	Boyd Way	Alley	Flat	No Waterway Nearby	Yes	Less than 100 Ft
Wilkinsburg	Bryan Way	Alley	Flat	No Waterway Nearby	Yes	Less than 100 Ft
Wilkinsburg	Campbell Street Wilkinsburg	Empty Lot	Gently Sloped	No Waterway Nearby	Yes	Less than 100 Ft
Wilkinsburg	Campbell Street Wilkinsburg 2	Empty Lot	Gently Sloped	No Waterway Nearby	Yes	Less than 100 Ft
Wilkinsburg	Campbell Street Wilkinsburg 3	Abandoned Bldg	Flat	No Waterway Nearby	No	Less than 100 Ft
Wilkinsburg	Coal Street	Wooded Hillside	Steeply Sloped	No Waterway Nearby	Yes	Less than 100 Ft
Wilkinsburg	Cresson Street	Roadway	Gently Sloped	No Waterway Nearby	Yes	Less than 100 Ft
Wilkinsburg	Culp Way	Alley	Flat	No Waterway Nearby	Yes	Less than 100 Ft
Wilkinsburg	Dell Way	Alley	Moderately Sloped	No Waterway Nearby	Yes	Less than 100 Ft
Wilkinsburg	East Street Wilkinsburg	Alley	Flat	No Waterway Nearby	Yes	Less than 100 Ft
Wilkinsburg	East Swissvale Avenue	Abandoned Bldg	Flat	No Waterway Nearby	Yes	Less than 100 Ft
Wilkinsburg	Ecker and Hazel Way	Alley	Flat	No Waterway Nearby	Yes	Less than 100 Ft
Wilkinsburg	Elbe Way	Alley	Flat	No Waterway Nearby	Yes	Less than 100 Ft
Wilkinsburg	Ella Street	Empty Lot	Gently Sloped	No Waterway Nearby	Yes	Less than 100 Ft
Wilkinsburg	Elm Street	Abandoned Bldg	Flat	No Waterway Nearby	Yes	Less than 100 Ft
Wilkinsburg	Fahnestock Avenue Wilkinsburg	Alley	Flat	No Waterway Nearby	Yes	100 Ft - .25 Miles
Wilkinsburg	Franklin Avenue Wilkinsburg	Empty Lot	Flat	No Waterway Nearby	No	Less than 100 Ft
Wilkinsburg	Glenn Avenue	Empty Lot	Gently Sloped	No Waterway Nearby	Yes	Less than 100 Ft
Wilkinsburg	Grant Way	Alley	Flat	No Waterway Nearby	Yes	Less than 100 Ft
Wilkinsburg	Hackett Way Wilkinsburg	Alley	Flat	No Waterway Nearby	Yes	Less than 100 Ft
Wilkinsburg	Hill Avenue	Roadway	Flat	No Waterway Nearby	Yes	Less than 100 Ft
Wilkinsburg	Horner Way	Roadway	Flat	No Waterway Nearby	Yes	Less than 100 Ft
Wilkinsburg	James Street	Mixed	Flat	No Waterway Nearby	Yes	Less than 100 Ft

Allegheny County Dump Site Survey and Assessment

2017 Report

Municipality	Location	Area Type	Terrain Type	Distance from Waterway	Near Green Space	Nearest Residence
Wilkinsburg	Mill Street	Empty Lot	Flat	No Waterway Nearby	Yes	Less than 100 Ft
Wilkinsburg	Mooseheart Street	Empty Lot	Flat	No Waterway Nearby	Yes	Less than 100 Ft
Wilkinsburg	No Name Alley Wilkinsburg	Alley	Flat	No Waterway Nearby	Yes	Less than 100 Ft
Wilkinsburg	No Name Alley Wilkinsburg 2	Roadway	Flat	No Waterway Nearby	Yes	Less than 100 Ft
Wilkinsburg	Oak Way	Alley	Flat	No Waterway Nearby	Yes	Less than 100 Ft
Wilkinsburg	Outlook Way	Alley	Flat	No Waterway Nearby	Yes	Less than 100 Ft
Wilkinsburg	Pasadena Avenue	Roadway	Flat	No Waterway Nearby	Yes	Less than 100 Ft
Wilkinsburg	Princeton Blvd	Roadway	Flat	No Waterway Nearby	Yes	Less than 100 Ft
Wilkinsburg	Princeton Blvd 2	Abandoned Bldg	Flat	No Waterway Nearby	Yes	Less than 100 Ft
Wilkinsburg	Rebecca Avenue	Abandoned Bldg	Flat	No Waterway Nearby	No	Less than 100 Ft
Wilkinsburg	Stoner Way	Alley	Flat	No Waterway Nearby	Yes	Less than 100 Ft
Wilkinsburg	Telephone Way	Abandoned Bldg	Flat	No Waterway Nearby	Yes	Less than 100 Ft
Wilkinsburg	Washington Way	Alley	Gently Sloped	No Waterway Nearby	Yes	Less than 100 Ft
Wilmerding	Morningside Avenue	Wooded Hillside	Gently Sloped	More than 100 Ft	Yes	Less than 100 Ft
Wilmerding	Orient Street	Wooded Hillside	Steeply Sloped	No Waterway Nearby	Yes	100 Ft - .25 Miles
Wilmerding	Orient Street 2	Roadway	Flat	No Waterway Nearby	Yes	Less than 100 Ft
Wilmerding	Wilmerding/ Monroeville	Roadway	Gently Sloped	No Waterway Nearby	Yes	Less than 100 Ft

Allegheny County Illegal Dumping **Waste Characteristics** by Municipality

Municipality	Location	Estimated Tons	Bagged Trash	Household Trash	Plastics	Chemical Waste	Renovation Debris	Yard Waste	Electronics	Large Appliance Count	Television Count	Tire Count	Curbside Recycling	Drop-off Recycling
Aleppo	Redgate Road	0.6	No	Yes	Yes	No	Yes	Yes	No	0	0	17	No	No
Avalon	Norwood and City View	0.5	No	Yes	Yes	Yes	Yes	Yes	No	0	0	0	Yes	Yes
Baldwin	Wilson Drive	0.5	No	No	No	No	Yes	Yes	No	0	0	2	No	No
Bell Acres	Sevin Road	2.8	No	Yes	Yes	No	No	Yes	No	10	3	50	Yes	Yes
Bellevue	Jackman Ave Below Bridge	0.3	No	Yes	Yes	No	No	No	No	0	0	4	Yes	Yes
Bellevue	Maple Ave	1.8	No	Yes	Yes	No	Yes	Yes	No	0	0	50	Yes	Yes
Braddock	1st Street	0.3	No	No	No	No	No	No	No	0	1	2	No	No
Braddock	5th and Washington	0.4	No	Yes	Yes	No	Yes	Yes	No	0	0	10	No	No
Braddock	9th Street	2.0	Yes	Yes	Yes	Yes	Yes	Yes	Yes	0	4	20	No	No
Braddock	April Way	1.0	Yes	Yes	No	Yes	Yes	No	No	0	0	6	No	No
Braddock	Ash Street	0.3	No	Yes	Yes	Yes	Yes	Yes	No	0	0	9	No	No
Braddock	Birch Road	0.3	Yes	No	No	No	No	No	No	0	8	0	No	No
Braddock	Charles Way	2.0	No	Yes	Yes	No	Yes	No	Yes	1	5	5	No	No
Braddock	Cherry and Washington	17.5	No	Yes	Yes	No	No	Yes	No	0	1	500	No	No
Braddock	Cherry and Washington 2	17.7	Yes	Yes	Yes	No	Yes	Yes	Yes	0	10	500	No	No
Braddock	Cherry Way	2.0	Yes	Yes	Yes	No	Yes	Yes	No	0	8	30	No	No
Braddock	Cherry Way 2	35.1	Yes	Yes	Yes	Yes	Yes	Yes	Yes	0	5	1000	No	No
Braddock	Cherry Way 3	10.5	Yes	Yes	Yes	Yes	Yes	Yes	No	0	2	300	No	No
Braddock	Corey Avenue	0.5	No	No	No	No	Yes	No	No	0	0	2	No	No

Allegheny County Dump Site Survey and Assessment
2017 Report

Municipality	Location	Estimated Tons	Bagged Trash	Household Trash	Plastics	Chemical Waste	Renovation Debris	Yard Waste	Electronics	Large Appliance Count	Television Count	Tire Count	Curbside Recycling	Drop-off Recycling
Braddock	Grape Street	1.2	Yes	Yes	Yes	No	Yes	Yes	Yes	0	1	35	No	No
Braddock	Halket Street	1.0	No	No	Yes	No	Yes	No	No	0	1	1	No	No
Braddock	Helena and 1st	0.3	No	Yes	No	No	No	No	No	0	0	4	No	No
Braddock	Helena Street	3.5	No	Yes	No	No	Yes	No	No	0	1	100	No	No
Braddock	July Way	1.0	No	Yes	No	No	Yes	No	No	0	0	26	No	No
Braddock	Maple Way	0.5	Yes	Yes	Yes	No	No	No	No	0	1	10	No	No
Braddock	Maple Way 2	1.0	Yes	No	No	Yes	Yes	No	No	0	0	0	No	No
Braddock	May Way	2.0	Yes	Yes	Yes	Yes	Yes	Yes	No	1	8	13	No	No
Braddock	May Way 2	0.3	Yes	Yes	No	No	Yes	No	No	1	0	4	No	No
Braddock	Oliver Street	2.0	Yes	Yes	Yes	Yes	Yes	No	No	0	4	30	No	No
Braddock	Oliver Street 2	0.3	No	Yes	Yes	No	Yes	No	No	0	1	7	No	No
Braddock	Pine Way and Gate Street	1.0	Yes	Yes	Yes	No	Yes	Yes	No	0	0	6	No	No
Braddock	Summit Street Lot	2.0	Yes	Yes	Yes	Yes	Yes	Yes	No	0	1	20	No	No
Braddock	Union Street Alley	0.7	Yes	Yes	No	No	Yes	No	No	0	0	20	No	No
Braddock	Vine Street	1.0	Yes	Yes	Yes	No	Yes	No	No	0	0	12	No	No
Braddock	Washington and 9th	3.0	No	Yes	No	No	Yes	No	No	0	1	50	No	No
Braddock	Washington and McCune	3.0	No	No	No	No	No	No	No	0	4	40	No	No
Braddock	Willow Way	1.5	No	Yes	Yes	Yes	Yes	Yes	No	0	5	40	No	No
Braddock	Yew Street	0.5	Yes	Yes	No	No	Yes	Yes	No	0	8	3	No	No
Braddock Hills	Center Street	0.3	No	No	No	Yes	No	No	No	0	0	6	No	No
Braddock Hills	Delaware Avenue	0.3	No	No	No	No	Yes	No	No	0	0	6	No	No
Braddock Hills	Montana Ave 2	0.3	No	No	No	No	Yes	No	No	0	0	7	No	No

Allegheny County Dump Site Survey and Assessment
2017 Report

Municipality	Location	Estimated Tons	Bagged Trash	Household Trash	Plastics	Chemical Waste	Renovation Debris	Yard Waste	Electronics	Large Appliance Count	Television Count	Tire Count	Curbside Recycling	Drop-off Recycling
Braddock Hills	Montana Avenue	1.0	Yes	Yes	Yes	Yes	Yes	Yes	No	0	4	15	No	No
Brentwood	Wanley Road	0.4	No	No	No	No	No	No	No	0	0	12	Yes	Yes
Bridgeville	Hickman Street	0.5	No	Yes	No	No	Yes	Yes	No	0	0	1	Yes	Yes
Bridgeville	Union Street	1.0	No	Yes	Yes	No	Yes	Yes	No	0	0	6	Yes	Yes
Carnegie	Run St.	0.3	No	Yes	No	No	No	No	No	0	0	7	Yes	Yes
Churchill	McCrary Road	0.3	Yes	Yes	No	No	No	Yes	No	0	0	0	Yes	Yes
Churchill	Rodi Road Churchill	0.3	Yes	Yes	Yes	No	No	No	No	0	0	0	Yes	Yes
Clairton	Boundary Ave	1.0	Yes	Yes	Yes	Yes	Yes	Yes	No	0	0	20	Yes	Yes
Clairton	Broadway Street	2.0	Yes	Yes	Yes	Yes	Yes	Yes	Yes	2	4	50	Yes	Yes
Clairton	Coulson Avenue	0.3	Yes	Yes	No	No	Yes	No	No	0	2	1	Yes	Yes
Clairton	Linden Avenue	4.0	Yes	Yes	Yes	Yes	Yes	Yes	Yes	3	10	100	Yes	Yes
Clairton	Miller Road	0.4	No	Yes	No	No	Yes	No	No	0	0	10	Yes	Yes
Clairton	Ridge Avenue and Fifth	0.5	No	Yes	Yes	No	No	Yes	No	0	1	4	Yes	Yes
Clairton	Shaw Avenue	0.3	No	No	No	No	No	No	No	0	2	8	Yes	Yes
Clairton	Spring Alley	1.0	No	No	No	No	Yes	No	No	0	0	7	Yes	Yes
Clairton	Spring Alley 2	1.0	Yes	Yes	Yes	No	No	Yes	No	0	3	5	Yes	Yes
Clairton	St. Clair Ravine	1.0	Yes	Yes	Yes	Yes	Yes	Yes	No	0	0	5	Yes	Yes
Clairton	Stewart Alley	0.3	Yes	No	No	No	No	Yes	No	0	0	0	Yes	Yes
Clairton	Stewart and Locust	0.3	No	No	Yes	No	Yes	Yes	No	0	0	6	Yes	Yes
Clairton	Vankirk Alley	1.0	Yes	Yes	Yes	No	Yes	Yes	No	0	1	10	Yes	Yes
Clairton	Wabash Ave	3.8	Yes	Yes	Yes	Yes	Yes	Yes	Yes	2	5	100	Yes	Yes
Clairton	Walnut Alley and Ridge Ave	0.5	No	Yes	No	No	Yes	No	No	0	0	4	Yes	Yes

Allegheny County Dump Site Survey and Assessment
2017 Report

Municipality	Location	Estimated Tons	Bagged Trash	Household Trash	Plastics	Chemical Waste	Renovation Debris	Yard Waste	Electronics	Large Appliance Count	Television Count	Tire Count	Curbside Recycling	Drop-off Recycling
Collier	Baldwin Rd Ext	4.0	Yes	Yes	Yes	No	Yes	Yes	Yes	10	0	15	Yes	Yes
Collier	Fort Pitt Rd.	1.0	No	Yes	Yes	No	No	Yes	No	0	5	20	Yes	Yes
Collier	Gregg Station Rd	1.5	No	No	No	No	No	No	No	1	0	40	Yes	Yes
Collier	Noblestown Rd Hairpin Turn	0.3	No	No	No	No	No	No	No	0	2	2	Yes	Yes
Collier	Thoms and Pinch	1.0	No	Yes	No	No	No	Yes	No	0	0	30	Yes	Yes
Collier	Thoms Run near Battle Ridge Rd	0.3	No	Yes	Yes	No	No	No	No	0	0	4	Yes	Yes
Coraopolis	2nd and Main	1.0	No	Yes	Yes	No	Yes	Yes	No	0	0	0	Yes	Yes
Coraopolis	5th and Mulberry	0.3	No	Yes	Yes	No	Yes	Yes	No	0	3	0	Yes	Yes
Coraopolis	Brook St	4.5	No	Yes	Yes	No	Yes	Yes	No	0	2	70	Yes	Yes
Coraopolis	Brook St Parking Lot	0.5	No	Yes	Yes	No	Yes	Yes	No	0	1	10	Yes	Yes
Coraopolis	Elm Way	0.5	No	Yes	Yes	No	Yes	Yes	No	0	1	0	Yes	Yes
Coraopolis	Petroleum Avenue	3.0	No	Yes	Yes	No	Yes	No	No	0	0	0	Yes	Yes
Crescent	Crescent Blvd and Osborne	0.3	No	No	No	No	Yes	Yes	No	0	0	0	Yes	Yes
Crescent	School St	0.5	No	Yes	Yes	No	Yes	No	No	0	0	3	Yes	Yes
Crescent	Spring Run Road	2.0	Yes	Yes	No	No	Yes	Yes	Yes	2	0	3	Yes	Yes
Dravosburg	Curry Hollow Road	1.0	Yes	Yes	Yes	No	Yes	Yes	No	0	1	4	No	No
Dravosburg	Washington Avenue	10.5	No	No	No	No	No	No	No	0	3	300	No	No
Duquesne	12 Viola Ave	3.0	No	Yes	No	No	Yes	Yes	No	0	5	5	Yes	Yes
Duquesne	3rd Street	0.3	No	Yes	No	No	Yes	Yes	No	1	0	2	Yes	Yes
Duquesne	Ash Alley	2.0	Yes	Yes	No	No	Yes	Yes	No	0	2	3	Yes	Yes
Duquesne	Beech Alley	2.0	No	Yes	Yes	No	Yes	Yes	No	0	0	7	Yes	Yes
Duquesne	Cedar Street	0.4	No	Yes	No	No	Yes	Yes	No	0	0	10	Yes	Yes

Allegheny County Dump Site Survey and Assessment
2017 Report

Municipality	Location	Estimated Tons	Bagged Trash	Household Trash	Plastics	Chemical Waste	Renovation Debris	Yard Waste	Electronics	Large Appliance Count	Television Count	Tire Count	Curbside Recycling	Drop-off Recycling
Duquesne	Clark and Maple	5.2	No	No	Yes	No	Yes	No	Yes	4	300	0	Yes	Yes
Duquesne	Hamilton Street	0.3	Yes	Yes	No	No	Yes	Yes	No	1	0	1	Yes	Yes
Duquesne	Hazel Alley	1.0	No	Yes	No	No	Yes	No	Yes	0	0	10	Yes	Yes
Duquesne	Hickory Alley	0.5	No	Yes	No	No	Yes	No	No	0	0	6	Yes	Yes
Duquesne	Hickory Alley South	0.7	No	No	No	No	Yes	No	No	0	0	20	Yes	Yes
Duquesne	Huckleberry and Edith	1.0	No	Yes	Yes	No	Yes	Yes	Yes	1	2	0	Yes	Yes
Duquesne	McKee Ave	4.0	Yes	Yes	Yes	No	Yes	Yes	Yes	1	2	0	Yes	Yes
Duquesne	Mulberry Alley	0.5	No	Yes	No	No	Yes	Yes	No	0	0	0	Yes	Yes
Duquesne	Mulberry and Fourth Field	2.0	No	Yes	No	No	Yes	Yes	No	0	0	50	Yes	Yes
Duquesne	Mulberry St Garage	0.5	No	Yes	No	No	Yes	Yes	No	0	0	0	Yes	Yes
Duquesne	Oak Alley	3.0	Yes	Yes	Yes	No	Yes	Yes	Yes	2	5	10	Yes	Yes
Duquesne	Prune Alley Garage	1.0	No	Yes	No	No	Yes	Yes	No	0	0	5	Yes	Yes
Duquesne	Prune Alley middle	0.5	No	Yes	No	No	Yes	Yes	No	0	0	12	Yes	Yes
Duquesne	Prune and Oliver	2.0	No	Yes	No	No	Yes	Yes	Yes	2	0	5	Yes	Yes
Duquesne	Wood Al	0.3	No	No	No	No	No	No	No	0	2	2	Yes	Yes
East Pittsburgh	Main Street East Pittsburgh	0.8	Yes	Yes	Yes	No	Yes	Yes	No	1	0	20	Yes	Yes
East Pittsburgh	Westinghouse Floodgate	3.5	No	Yes	Yes	No	Yes	Yes	No	0	0	100	Yes	Yes
Elizabeth	Blythedale Park	2.0	No	No	No	No	Yes	Yes	No	0	0	0	No	No
Elizabeth	Boston Hollow Road	1.5	No	No	No	No	No	No	No	1	0	40	No	No
Elizabeth	Keddie Drive	1.8	No	No	No	No	No	No	No	0	0	50	No	No
Elizabeth	Boyds Hollow Road	0.7	No	No	No	No	No	No	No	0	0	19	No	No
Elizabeth	1025 Boyds Hollow Road	4.0	Yes	Yes	Yes	Yes	Yes	Yes	No	0	0	0	No	No

Allegheny County Dump Site Survey and Assessment
2017 Report

Municipality	Location	Estimated Tons	Bagged Trash	Household Trash	Plastics	Chemical Waste	Renovation Debris	Yard Waste	Electronics	Large Appliance Count	Television Count	Tire Count	Curbside Recycling	Drop-off Recycling
Elizabeth	2010 Lovedale	3.5	No	Yes	No	No	No	No	No	0	1	25	No	No
Elizabeth	Blythdale Road	4.0	Yes	Yes	Yes	Yes	Yes	Yes	No	0	0	100	No	No
Elizabeth	Long Hollow Road	0.7	Yes	Yes	Yes	Yes	Yes	Yes	No	0	0	20	No	No
Elizabeth	Round Hill Road	5.0	No	No	No	No	Yes	No	No	0	0	13	No	No
Elizabeth	Forest Hill Road/ Smithdale Road	1.0	No	No	No	No	No	No	No	0	0	25	No	No
Etna	Etna Industrial Street	1.0	No	Yes	Yes	No	Yes	Yes	No	0	1	2	Yes	Yes
Etna	Finney Street Etna	1.0	No	Yes	Yes	No	Yes	Yes	No	0	0	3	Yes	Yes
Fawn Township	Metz Road	1.6	Yes	Yes	Yes	No	Yes	No	No	0	1	45	No	No
Findlay	Boundary / close to Clinton	1.5	No	No	No	No	No	Yes	No	0	0	0	Yes	Yes
Findlay	Camp Meeting Road	0.5	No	Yes	No	No	No	No	No	1	0	2	Yes	Yes
Findlay	Enlow Road	1.0	No	Yes	Yes	No	Yes	Yes	No	0	0	0	Yes	Yes
Findlay	Moon Clinton Road site 1	6.0	No	Yes	No	No	Yes	Yes	No	0	0	0	Yes	Yes
Findlay	Moon Clinton Road site 2	0.5	No	Yes	No	No	No	No	No	0	0	10	Yes	Yes
Findlay	Point Park Road	1.0	No	Yes	No	No	No	No	Yes	3	0	2	Yes	Yes
Findlay	Potato Garden Road	4.0	No	Yes	No	No	Yes	Yes	Yes	1	0	9	Yes	Yes
Findlay	Potato Garden/ Burgettstown Road	1.0	Yes	Yes	No	Yes	Yes	No	No	1	0	0	Yes	Yes
Findlay	Robinson Road	5.0	No	No	No	No	Yes	Yes	No	0	0	3	Yes	Yes
Findlay	Spring Run Road Extension	2.5	No	No	No	No	Yes	No	No	0	0	0	Yes	Yes
Findlay	Washington Road	1.8	Yes	Yes	No	No	Yes	Yes	Yes	1	0	48	Yes	Yes
Forward	2001/ Bunola River Blvd Site 1	0.5	Yes	No	No	No	Yes	Yes	Yes	1	2	10	No	No
Forward	2001/ Bunola River Blvd Site 2	0.5	Yes	Yes	No	No	Yes	No	Yes	0	2	6	No	No
Forward	2001/ Bunola River Blvd Site 3	0.3	Yes	Yes	No	No	Yes	Yes	Yes	0	5	4	No	No

Allegheny County Dump Site Survey and Assessment
2017 Report

Municipality	Location	Estimated Tons	Bagged Trash	Household Trash	Plastics	Chemical Waste	Renovation Debris	Yard Waste	Electronics	Large Appliance Count	Television Count	Tire Count	Curbside Recycling	Drop-off Recycling
Forward	2001/ Bunola River Blvd Site 4	1.0	Yes	Yes	No	No	Yes	Yes	No	0	0	30	No	No
Forward	Bunda River RR Site	1.0	No	No	No	No	No	No	No	0	0	1	No	No
Forward	Elkhorn Ravine	0.8	No	Yes	Yes	No	Yes	Yes	No	1	0	20	No	No
Forward	Elkhorn Road site 1	1.2	No	Yes	No	No	Yes	No	No	0	0	35	No	No
Forward	Elkhorn Road site 2	3.8	Yes	Yes	No	Yes	Yes	Yes	Yes	2	4	100	No	No
Forward	Elkhorn Road site 3	0.5	No	No	No	No	No	No	No	0	0	13	No	No
Forward	Ella Hollow Road	0.3	No	No	No	No	No	No	No	0	0	4	No	No
Forward	Kelly Hollow	1.0	No	Yes	No	No	Yes	No	No	0	0	3	No	No
Forward	Kelly Hollow 2	0.3	No	Yes	Yes	No	Yes	Yes	No	0	1	4	No	No
Forward	Kelly Hollow 3	0.7	No	No	No	No	No	No	No	0	0	20	No	No
Forward	Kelly Ravine	5.0	No	Yes	Yes	No	Yes	Yes	No	0	0	5	No	No
Forward	Mountaintop Lane	10.0	Yes	Yes	Yes	Yes	Yes	Yes	No	0	0	100	No	No
Forward	Pangburn Hollow 1	0.3	No	No	No	No	No	No	No	0	8	0	No	No
Forward	Pangburn Hollow 2	1.8	No	No	No	No	No	No	No	0	0	50	No	No
Forward	Pangburn Hollow 3	0.2	No	No	No	No	No	No	No	0	3	0	No	No
Forward	Raccoon Run 3	0.5	No	Yes	No	No	No	No	No	0	0	13	No	No
Forward	Raccoon Run 4	0.3	No	Yes	Yes	No	Yes	Yes	No	1	0	0	No	No
Forward	Raccoon Run Road / Bunola Blvd	0.5	No	Yes	No	No	Yes	Yes	No	0	0	2	No	No
Forward	Raccoon Run Road site 2	0.5	Yes	Yes	No	No	No	No	No	1	1	1	No	No
Forward	Rainbow Run Road	1.0	No	No	No	No	No	No	No	0	0	30	No	No
Forward	Riverview Road	0.9	No	Yes	No	No	Yes	Yes	No	0	3	25	No	No
Forward	Rostosky 2	1.0	No	No	No	No	No	No	No	0	0	20	No	No

Allegheny County Dump Site Survey and Assessment
2017 Report

Municipality	Location	Estimated Tons	Bagged Trash	Household Trash	Plastics	Chemical Waste	Renovation Debris	Yard Waste	Electronics	Large Appliance Count	Television Count	Tire Count	Curbside Recycling	Drop-off Recycling
Forward	Unknown	0.7	No	Yes	No	No	No	Yes	No	0	0	20	No	No
Forward	Williamsport Road	0.3	No	Yes	No	No	No	Yes	No	0	0	8	No	No
Forward	Williamsport Road 2	0.3	No	No	No	No	No	No	No	0	0	8	No	No
Glassport/Lincoln	Harrison Street	1.0	Yes	Yes	Yes	No	Yes	Yes	No	1	0	20	No	No
Glassport/Lincoln	Oregon Street	1.0	Yes	Yes	Yes	Yes	Yes	Yes	No	0	0	1	No	No
Harrison Twp	Karns Road	3.0	No	Yes	Yes	No	Yes	Yes	No	0	0	25	Yes	Yes
Harrison Twp	River Road Natrona	0.5	No	Yes	Yes	No	No	No	No	0	0	0	Yes	Yes
Homestead	224 Joseph St	2.0	No	Yes	No	No	Yes	Yes	No	0	1	10	No	No
Homestead	E. Pink Way	2.0	No	Yes	Yes	No	Yes	Yes	No	0	4	0	No	No
Homestead	E. Plum Way	1.0	No	Yes	Yes	No	Yes	Yes	Yes	0	1	10	No	No
Homestead	Pine Way	1.5	No	Yes	Yes	No	Yes	Yes	No	0	5	30	No	No
Homestead	Rose Way	1.0	No	Yes	Yes	No	Yes	Yes	No	0	5	20	No	No
Homestead	W. Park Way	0.5	No	Yes	No	No	Yes	Yes	No	1	2	10	No	No
Homestead	West Oak Way	0.5	No	Yes	No	No	Yes	Yes	Yes	0	1	0	No	No
Homestead	West Pine Way	0.5	No	Yes	Yes	No	Yes	Yes	No	0	0	5	No	No
Indiana Twp	Cove Run Road	15.0	No	Yes	Yes	No	Yes	Yes	Yes	5	15	40	Yes	Yes
Jefferson Hills	Alice Mine Road	36.0	No	No	Yes	No	Yes	Yes	Yes	10	1	1000	Yes	Yes
Jefferson Hills	Coulson/Miller 2	0.1	No	Yes	No	No	No	No	Yes	0	0	2	Yes	Yes
Jefferson Hills	Gill Hall Road	1.5	No	Yes	No	No	Yes	Yes	No	0	0	5	Yes	Yes
Jefferson Hills	Old Clairton	8.8	No	Yes	No	No	Yes	Yes	No	0	0	250	Yes	Yes
Jefferson Hills	Wall Road site 1	0.5	No	No	No	No	Yes	Yes	No	0	1	15	Yes	Yes
Kennedy Twp	Creek St (Kennedy Twp)	350.0	No	Yes	Yes	No	Yes	Yes	No	0	0	10000	Yes	Yes

Allegheny County Dump Site Survey and Assessment
2017 Report

Municipality	Location	Estimated Tons	Bagged Trash	Household Trash	Plastics	Chemical Waste	Renovation Debris	Yard Waste	Electronics	Large Appliance Count	Television Count	Tire Count	Curbside Recycling	Drop-off Recycling
Kennedy Twp	Forest Grove	1.0	No	Yes	Yes	No	Yes	Yes	No	0	0	0	Yes	Yes
Kennedy Twp	Patterson Lane	0.5	No	No	No	No	Yes	No	No	0	0	10	Yes	Yes
Leetsdale	Avenue A	2.0	No	Yes	Yes	No	Yes	Yes	No	0	0	5	Yes	Yes
Liberty	River Ridge Road	1.8	Yes	Yes	No	No	No	No	No	0	0	50	Yes	Yes
Lincoln	Deer Lane	0.7	Yes	No	Yes	No	Yes	Yes	Yes	0	3	20	No	No
Lincoln	Lincoln Boulevard	17.5	No	No	No	No	Yes	No	No	0	0	500	No	No
Marshall	Freeport Road Marshall Twp	0.3	No	No	No	No	Yes	No	No	0	0	0	Yes	Yes
McKees Rocks	Robb St.	1.0	No	No	No	No	Yes	Yes	No	0	0	5	Yes	Yes
McKees Rocks	Agnes	0.5	No	No	Yes	No	No	Yes	No	0	0	0	Yes	Yes
McKees Rocks	Alexander Street	0.5	No	Yes	No	No	Yes	No	No	0	0	0	Yes	Yes
McKees Rocks	Camp Street	0.3	Yes	Yes	Yes	No	Yes	Yes	No	0	0	0	Yes	Yes
McKees Rocks	Davis Ave	1.0	No	Yes	Yes	No	Yes	Yes	No	0	3	10	Yes	Yes
McKees Rocks	Davis Ave/Highland Ave Trail	0.6	No	Yes	Yes	No	Yes	No	No	0	2	15	Yes	Yes
McKees Rocks	Francis St	0.3	No	No	No	No	No	No	No	0	0	0	Yes	Yes
McKees Rocks	Grant Street/Linden Ave	25.0	Yes	No	No	No	Yes	No	No	0	1	50	Yes	Yes
McKees Rocks	Irwin Street	0.5	No	No	No	No	Yes	No	No	0	0	0	Yes	Yes
McKees Rocks	Linton Street	3.0	Yes	Yes	No	No	Yes	Yes	No	0	2	50	Yes	Yes
McKees Rocks	Marion St	0.3	No	Yes	No	No	Yes	Yes	No	0	1	0	Yes	Yes
McKees Rocks	Metber Alley	1.0	Yes	Yes	No	No	Yes	No	No	0	2	0	Yes	Yes
McKees Rocks	Owen St. and Chartiers Ave	0.5	No	Yes	Yes	No	Yes	Yes	No	0	0	0	Yes	Yes
McKees Rocks	Penn Alley	1.0	Yes	Yes	Yes	No	Yes	No	No	0	0	3	Yes	Yes
McKees Rocks	Stormpels Ally	1.5	No	No	No	No	No	Yes	No	0	0	0	Yes	Yes

Allegheny County Dump Site Survey and Assessment
2017 Report

Municipality	Location	Estimated Tons	Bagged Trash	Household Trash	Plastics	Chemical Waste	Renovation Debris	Yard Waste	Electronics	Large Appliance Count	Television Count	Tire Count	Curbside Recycling	Drop-off Recycling
McKeesport	2011 Riverview Street	3.0	No	Yes	Yes	No	Yes	Yes	No	0	2	2	Yes	Yes
McKeesport	623 Fairview	3.0	No	Yes	Yes	No	Yes	Yes	No	0	0	5	Yes	Yes
McKeesport	836 Huey St.	1.5	Yes	Yes	Yes	No	Yes	Yes	No	0	0	0	Yes	Yes
McKeesport	Alpine Alley	1.5	Yes	No	No	No	Yes	No	No	0	0	1	Yes	Yes
McKeesport	Alpine Alley 2 near Centennial School	1.0	Yes	Yes	Yes	No	Yes	Yes	No	0	2	0	Yes	Yes
McKeesport	Bouquet Corner	2.0	No	Yes	Yes	No	Yes	Yes	No	0	2	30	Yes	Yes
McKeesport	Center Street (2118)	3.0	Yes	Yes	Yes	Yes	Yes	Yes	No	0	2	20	Yes	Yes
McKeesport	Clay Alley	2.0	No	Yes	Yes	No	Yes	Yes	No	2	5	20	Yes	Yes
McKeesport	Clay Alley 2	1.0	Yes	Yes	Yes	No	Yes	Yes	No	0	1	5	Yes	Yes
McKeesport	Clay Alley 3	1.0	No	Yes	Yes	No	Yes	Yes	No	0	0	5	Yes	Yes
McKeesport	Colfax and Hazel	5.0	No	Yes	No	No	Yes	Yes	No	0	2	30	Yes	Yes
McKeesport	Douglas Street	1.0	No	No	No	No	Yes	Yes	No	0	0	0	Yes	Yes
McKeesport	Enterprise Street	0.3	No	Yes	No	No	Yes	Yes	No	0	0	2	Yes	Yes
McKeesport	Express Alley	0.3	No	Yes	No	No	Yes	Yes	No	0	0	6	Yes	Yes
McKeesport	Express Alley 2	0.7	No	Yes	No	Yes	Yes	Yes	No	0	0	20	Yes	Yes
McKeesport	Grant Street	2.0	Yes	Yes	Yes	No	Yes	Yes	Yes	0	10	20	Yes	Yes
McKeesport	Gross Street	0.3	Yes	Yes	No	Yes	Yes	No	No	0	0	2	Yes	Yes
McKeesport	Haw Alley 2	1.0	No	No	No	No	Yes	Yes	No	0	20	0	Yes	Yes
McKeesport	Haw Alley and Wall Alley	1.9	No	Yes	No	No	Yes	Yes	No	0	7	50	Yes	Yes
McKeesport	Jenny Lind Street	5.0	No	Yes	No	No	Yes	Yes	No	1	0	0	Yes	Yes
McKeesport	John Street	7.0	No	Yes	Yes	No	Yes	No	No	0	0	200	Yes	Yes
McKeesport	Juanita	1.0	No	Yes	Yes	No	Yes	Yes	Yes	0	4	20	Yes	Yes

Allegheny County Dump Site Survey and Assessment
2017 Report

Municipality	Location	Estimated Tons	Bagged Trash	Household Trash	Plastics	Chemical Waste	Renovation Debris	Yard Waste	Electronics	Large Appliance Count	Television Count	Tire Count	Curbside Recycling	Drop-off Recycling
McKeesport	Lesue Alley 1	1.0	No	Yes	Yes	No	Yes	Yes	Yes	1	0	2	Yes	Yes
McKeesport	Lesue Alley 2	0.5	No	Yes	Yes	No	Yes	Yes	No	0	0	12	Yes	Yes
McKeesport	Lesue Alley 3	2.0	No	Yes	Yes	No	Yes	Yes	Yes	0	1	20	Yes	Yes
McKeesport	Lincoln St dead end	2.0	Yes	Yes	Yes	Yes	Yes	Yes	No	0	2	0	Yes	Yes
McKeesport	Locust St.	2.0	No	Yes	Yes	No	Yes	No	No	0	0	30	Yes	Yes
McKeesport	Logan Alley	3.0	Yes	Yes	Yes	Yes	Yes	Yes	No	0	10	30	Yes	Yes
McKeesport	Martha Alley	1.5	Yes	Yes	No	No	Yes	Yes	No	0	0	30	Yes	Yes
McKeesport	Martin and Brisbane St.	1.5	Yes	Yes	Yes	No	Yes	Yes	No	0	1	5	Yes	Yes
McKeesport	Martin and Lawndale Garage	1.0	Yes	Yes	Yes	Yes	Yes	Yes	No	0	0	0	Yes	Yes
McKeesport	Martin between Colfax and Versailles	1.0	No	Yes	Yes	No	Yes	Yes	No	0	0	2	Yes	Yes
McKeesport	Monterey Street	2.0	Yes	Yes	Yes	Yes	Yes	Yes	No	1	3	20	Yes	Yes
McKeesport	Olive and Lincoln St	0.6	No	Yes	Yes	No	Yes	Yes	No	1	0	1	Yes	Yes
McKeesport	Palmer Street and 16th (paper st)	1.0	No	Yes	No	No	Yes	Yes	No	0	1	15	Yes	Yes
McKeesport	Ravine and White Street	1.0	No	Yes	Yes	No	Yes	Yes	No	0	0	30	Yes	Yes
McKeesport	Ravine Street	1.0	Yes	Yes	Yes	No	Yes	Yes	No	0	0	5	Yes	Yes
McKeesport	Ridge and Colfax	4.0	Yes	Yes	Yes	No	Yes	Yes	No	15	10	20	Yes	Yes
McKeesport	Romine Avenue	1.0	No	Yes	Yes	No	Yes	No	No	0	0	0	Yes	Yes
McKeesport	Spring Street	0.5	No	Yes	No	No	No	Yes	No	0	0	15	Yes	Yes
McKeesport	Stone Alley	2.5	No	Yes	Yes	No	Yes	Yes	No	1	1	20	Yes	Yes
McKeesport	Tube Works Alley	1.2	No	Yes	No	No	Yes	Yes	No	0	10	30	Yes	Yes
McKeesport	Tube Works Alley dead-end	140.1	No	Yes	No	No	Yes	No	No	0	6	4000	Yes	Yes
McKeesport	Tube Works Alley near 11th St.	1.0	Yes	Yes	Yes	Yes	Yes	Yes	No	0	0	5	Yes	Yes

Allegheny County Dump Site Survey and Assessment
2017 Report

Municipality	Location	Estimated Tons	Bagged Trash	Household Trash	Plastics	Chemical Waste	Renovation Debris	Yard Waste	Electronics	Large Appliance Count	Television Count	Tire Count	Curbside Recycling	Drop-off Recycling
McKeesport	Tube Works Alley near 13th St.	0.3	No	Yes	Yes	Yes	Yes	Yes	No	0	0	6	Yes	Yes
McKeesport	White Street	1.5	Yes	Yes	Yes	No	Yes	Yes	No	0	0	20	Yes	Yes
McKeesport	Willow and Grant	1.5	No	Yes	Yes	No	Yes	Yes	No	0	0	4	Yes	Yes
McKeesport	Wisp Alley	2.0	No	Yes	Yes	No	Yes	Yes	No	0	10	20	Yes	Yes
Monroeville	Old Frankstown/ 286 W	0.5	No	No	No	No	No	Yes	No	0	0	12	Yes	Yes
Monroeville	Old William Penn	1.0	No	No	Yes	Yes	Yes	Yes	No	2	0	4	Yes	Yes
Monroeville	Pitcairn Road and Stroschein Road	0.7	Yes	Yes	Yes	No	Yes	Yes	No	0	0	20	Yes	Yes
Monroeville	Pitcarin Road	1.2	No	No	No	No	No	No	No	0	0	35	Yes	Yes
Monroeville	Sunset	1.0	No	Yes	Yes	Yes	Yes	Yes	No	2	0	0	Yes	Yes
Monroeville	Taylor Street Monroeville	7.0	No	Yes	Yes	No	Yes	Yes	No	0	0	200	Yes	Yes
Moon Twp.	Hirshinger Road	0.3	No	Yes	No	No	Yes	Yes	No	0	0	0	Yes	Yes
Moon Twp.	Hookstown Grade Run/ Beaver Road	0.1	No	No	No	No	Yes	Yes	No	0	0	0	Yes	Yes
Moon Twp.	Old Thorn Run Road	1.0	Yes	Yes	No	No	Yes	Yes	No	0	0	2	Yes	Yes
Moon Twp.	Thorn Run and Old Thorn Run	5.0	Yes	Yes	No	No	Yes	Yes	No	0	0	0	Yes	Yes
Mt. Oliver	Transvers and Lacona Valley	5.0	Yes	Yes	Yes	Yes	Yes	Yes	No	0	5	20	No	No
Munhall	Creek St (Munhall)	1.0	No	Yes	Yes	No	Yes	Yes	Yes	0	0	25	Yes	Yes
Munhall	Hazel and Gold	2.0	No	Yes	Yes	No	Yes	Yes	Yes	5	0	10	Yes	Yes
Munhall	Hickory and Andrew	3.0	Yes	Yes	Yes	No	Yes	Yes	Yes	6	0	0	Yes	Yes
Munhall	Walnut Way	1.0	No	Yes	Yes	No	Yes	No	No	2	2	0	Yes	Yes
North Braddock	2nd and Hawkins	0.5	No	Yes	No	No	Yes	No	No	0	0	0	No	No
North Braddock	Bessemer Street	7.0	Yes	Yes	Yes	No	Yes	Yes	No	0	0	200	No	No
North Braddock	Cherry Way North Braddock	1.0	Yes	Yes	Yes	No	Yes	Yes	No	0	0	0	No	No

Allegheny County Dump Site Survey and Assessment
2017 Report

Municipality	Location	Estimated Tons	Bagged Trash	Household Trash	Plastics	Chemical Waste	Renovation Debris	Yard Waste	Electronics	Large Appliance Count	Television Count	Tire Count	Curbside Recycling	Drop-off Recycling
North Braddock	Cliff Street	2.0	Yes	Yes	Yes	No	Yes	Yes	No	3	10	3	No	No
North Braddock	Grove Avenue	0.5	No	Yes	Yes	No	Yes	Yes	No	0	1	5	No	No
North Braddock	Hope Street	0.3	Yes	Yes	Yes	No	Yes	Yes	No	0	0	7	No	No
North Braddock	Juno Way	1.5	No	Yes	Yes	No	Yes	Yes	No	0	0	20	No	No
North Braddock	Margaret Way	2.0	Yes	Yes	Yes	No	Yes	Yes	No	0	0	10	No	No
North Braddock	McCrea Way	1.8	No	Yes	Yes	No	Yes	Yes	No	0	0	50	No	No
North Braddock	Orchard Way	1.0	Yes	Yes	Yes	No	Yes	Yes	No	2	0	1	No	No
North Braddock	Reeves Street	1.0	No	Yes	Yes	No	Yes	Yes	No	0	1	1	No	No
North Braddock	Reeves Street 2	4.0	No	Yes	Yes	No	Yes	Yes	No	0	2	22	No	No
North Braddock	Reeves Way	2.1	No	Yes	Yes	No	Yes	Yes	No	3	5	50	No	No
North Braddock	Roy Street	1.0	Yes	Yes	Yes	No	Yes	No	No	0	0	0	No	No
North Braddock	Spring Street North Braddock	0.3	No	Yes	Yes	No	Yes	Yes	No	0	0	2	No	No
North Braddock	Sylvan Avenue	2.0	No	Yes	Yes	No	Yes	Yes	No	1	2	0	No	No
North Braddock	Violet Way and Shannon Ave	2.0	Yes	Yes	Yes	No	Yes	Yes	No	0	0	0	No	No
North Braddock	Yost Blvd / 6th Street	1.0	No	Yes	Yes	No	Yes	Yes	No	1	0	1	No	No
North Fayette	Donaldson Rd	15.0	No	No	Yes	No	Yes	Yes	No	0	0	100	Yes	Yes
North Fayette	Gamble Road	5.0	Yes	No	No	No	Yes	Yes	No	0	0	0	Yes	Yes
North Fayette	Mahoney Road by Hawthorne	0.3	No	No	No	No	No	No	No	0	1	0	Yes	Yes
North Fayette	N Star Rd 1	0.5	No	No	No	No	Yes	No	No	0	0	10	Yes	Yes
North Fayette	N Star Rd 2	0.1	No	Yes	No	No	No	No	No	0	3	1	Yes	Yes
North Fayette	N Star Rd 3	0.5	No	Yes	No	No	Yes	No	No	0	0	0	Yes	Yes
North Fayette	Noble St	4.0	No	No	No	No	Yes	Yes	No	0	0	1	Yes	Yes

Allegheny County Dump Site Survey and Assessment
2017 Report

Municipality	Location	Estimated Tons	Bagged Trash	Household Trash	Plastics	Chemical Waste	Renovation Debris	Yard Waste	Electronics	Large Appliance Count	Television Count	Tire Count	Curbside Recycling	Drop-off Recycling
North Fayette	Noblestown Road	0.3	No	No	No	No	No	No	No	0	0	8	Yes	Yes
North Fayette	Short Street	2.0	No	Yes	No	No	No	No	No	0	0	4	Yes	Yes
North Fayette	Stewart/Elliots Road	0.5	No	No	No	No	Yes	No	No	0	0	15	Yes	Yes
North Versailles	Westinghouse Ave	1.0	Yes	No	No	No	Yes	No	No	1	0	3	Yes	Yes
North Versailles	Crestas Avenue	0.5	No	No	Yes	Yes	No	No	No	0	0	15	Yes	Yes
North Versailles	Hoffman Road	1.0	No	Yes	Yes	No	Yes	Yes	No	0	0	2	Yes	Yes
North Versailles	Milligan Avenue	1.8	Yes	Yes	Yes	No	Yes	Yes	No	0	0	50	Yes	Yes
North Versailles	Oakdale Road	1.0	No	No	No	No	No	No	No	0	0	30	Yes	Yes
North Versailles	Osborne Street	2.0	Yes	Yes	No	No	Yes	Yes	No	1	10	50	Yes	Yes
North Versailles	Palma Street	0.5	No	Yes	No	No	No	No	No	0	1	0	Yes	Yes
North Versailles	Turner Street	0.5	No	No	No	No	No	Yes	No	0	0	13	Yes	Yes
North Versailles	1st and Markle	0.5	No	No	No	No	Yes	Yes	No	0	0	0	Yes	Yes
North Versailles	Homer Avenue	0.7	Yes	Yes	Yes	No	No	Yes	Yes	0	1	20	Yes	Yes
North Versailles	Hyer Avenue	0.5	No	No	No	No	No	No	No	0	0	9	Yes	Yes
North Versailles	Markle Street	0.5	No	Yes	No	No	No	No	No	0	1	9	Yes	Yes
Ohio Township	Roosevelt Road	0.5	No	No	Yes	No	Yes	Yes	No	0	0	0	Yes	Yes
Penn Hills	110 Everett	0.3	Yes	Yes	Yes	No	Yes	Yes	No	0	0	2	Yes	Yes
Penn Hills	3rd and Hudson	0.5	No	Yes	Yes	No	Yes	Yes	No	0	1	0	Yes	Yes
Penn Hills	7229 Lawton St.	0.5	Yes	Yes	Yes	No	Yes	Yes	No	0	0	5	Yes	Yes
Penn Hills	7922 Lincoln Rd.	0.5	No	Yes	Yes	No	No	No	No	0	0	6	Yes	Yes
Penn Hills	8336 Perchment St.	0.7	No	No	No	No	No	No	No	0	0	20	Yes	Yes
Penn Hills	8888 Westwood Rd.	0.5	Yes	Yes	Yes	No	Yes	Yes	No	0	1	6	Yes	Yes

Allegheny County Dump Site Survey and Assessment
2017 Report

Municipality	Location	Estimated Tons	Bagged Trash	Household Trash	Plastics	Chemical Waste	Renovation Debris	Yard Waste	Electronics	Large Appliance Count	Television Count	Tire Count	Curbside Recycling	Drop-off Recycling
Penn Hills	Bunny Way	1.0	Yes	Yes	Yes	No	Yes	Yes	No	0	2	20	Yes	Yes
Penn Hills	Burton Drive	1.0	No	Yes	Yes	No	Yes	Yes	No	0	7	8	Yes	Yes
Penn Hills	Caryl Road	0.3	No	Yes	Yes	No	No	No	No	0	0	8	Yes	Yes
Penn Hills	Central and Manilla	0.4	Yes	Yes	Yes	No	No	Yes	No	0	4	10	Yes	Yes
Penn Hills	Cushing St.	0.3	No	Yes	Yes	No	Yes	Yes	No	0	0	7	Yes	Yes
Penn Hills	Dersam St.	0.4	No	Yes	No	No	Yes	No	No	0	1	10	Yes	Yes
Penn Hills	E. Hill Rd.	1.0	Yes	Yes	Yes	No	Yes	Yes	No	0	5	25	Yes	Yes
Penn Hills	E. Lemington Rd.	1.0	Yes	Yes	Yes	No	Yes	Yes	No	0	4	20	Yes	Yes
Penn Hills	Elk Rd.	0.4	Yes	Yes	Yes	No	Yes	Yes	No	0	0	10	Yes	Yes
Penn Hills	Emerson Street and Tremont Street	3.0	Yes	Yes	Yes	No	Yes	Yes	No	0	1	8	Yes	Yes
Penn Hills	Evaline Street	1.0	No	Yes	Yes	No	Yes	No	No	0	0	3	Yes	Yes
Penn Hills	Ferndale and Lawndale	2.0	Yes	Yes	Yes	No	Yes	Yes	No	0	0	13	Yes	Yes
Penn Hills	Funston and Runnette	0.3	No	Yes	Yes	No	No	Yes	No	0	0	7	Yes	Yes
Penn Hills	Golden Rod Way	2.0	Yes	Yes	Yes	No	Yes	Yes	No	0	0	50	Yes	Yes
Penn Hills	Harvard and Parkridge	0.5	No	Yes	Yes	No	Yes	Yes	No	0	1	6	Yes	Yes
Penn Hills	Hilda and Manilla	5.0	Yes	Yes	Yes	Yes	Yes	Yes	Yes	0	20	100	Yes	Yes
Penn Hills	Hochberg Road	0.7	Yes	Yes	Yes	No	Yes	Yes	No	0	1	20	Yes	Yes
Penn Hills	Hunter Road	2.0	No	Yes	Yes	No	Yes	Yes	No	0	0	10	Yes	Yes
Penn Hills	Hunter Road 2	2.0	No	Yes	Yes	No	Yes	Yes	Yes	0	0	20	Yes	Yes
Penn Hills	Ildewood Rd	1.4	No	Yes	Yes	No	Yes	Yes	No	0	8	35	Yes	Yes
Penn Hills	Indian Creek Road	2.0	No	Yes	Yes	No	Yes	Yes	No	0	2	20	Yes	Yes
Penn Hills	Indiana Road	1.6	No	Yes	Yes	No	Yes	Yes	Yes	0	1	44	Yes	Yes

Allegheny County Dump Site Survey and Assessment
2017 Report

Municipality	Location	Estimated Tons	Bagged Trash	Household Trash	Plastics	Chemical Waste	Renovation Debris	Yard Waste	Electronics	Large Appliance Count	Television Count	Tire Count	Curbside Recycling	Drop-off Recycling
Penn Hills	Johnston Road	0.5	No	Yes	Yes	No	Yes	Yes	No	0	1	3	Yes	Yes
Penn Hills	Locust St.	5.0	Yes	Yes	Yes	No	Yes	No	No	0	2	110	Yes	Yes
Penn Hills	Lott Rd.	2.0	Yes	Yes	Yes	No	Yes	Yes	No	0	0	7	Yes	Yes
Penn Hills	Mohler St.	0.3	Yes	Yes	Yes	No	Yes	Yes	Yes	0	2	3	Yes	Yes
Penn Hills	Nadine and Lincoln	1.0	No	Yes	Yes	No	Yes	Yes	No	0	0	1	Yes	Yes
Penn Hills	Orlan Pl.	0.5	No	Yes	Yes	No	Yes	Yes	No	0	0	5	Yes	Yes
Penn Hills	Pear Alley	0.3	Yes	Yes	No	No	Yes	No	Yes	0	3	0	Yes	Yes
Penn Hills	Pershing St.	2.0	No	No	No	No	Yes	Yes	No	0	0	20	Yes	Yes
Penn Hills	Reiter Rd.	0.8	Yes	Yes	Yes	No	Yes	Yes	No	0	0	15	Yes	Yes
Penn Hills	Ross Rd.	2.0	Yes	Yes	Yes	No	Yes	Yes	No	0	6	55	Yes	Yes
Penn Hills	Schley St.	1.0	No	Yes	No	No	Yes	No	No	0	0	3	Yes	Yes
Penn Hills	Standard and Hansel	17.6	No	No	No	No	Yes	No	No	1	0	500	Yes	Yes
Penn Hills	Teirs St.	0.3	No	No	No	No	No	No	No	0	0	0	Yes	Yes
Penn Hills	Velte St.	3.0	Yes	Yes	Yes	No	Yes	Yes	No	0	0	0	Yes	Yes
Penn Hills	Verona Road	5.2	No	No	No	No	No	No	No	0	0	150	Yes	Yes
Pitcairn	Yes3No E	1.9	Yes	Yes	No	No	Yes	No	Yes	1	1	50	No	No
Plum Borough	Barnett / Pine Street	0.5	No	Yes	Yes	No	Yes	Yes	No	0	0	3	Yes	Yes
Plum Borough	Browntown and Zandona	0.5	No	No	No	No	Yes	No	No	0	0	0	Yes	Yes
Plum Borough	Clements Rd.	0.3	Yes	Yes	Yes	No	Yes	No	Yes	0	0	5	Yes	Yes
Plum Borough	Columbia Rd.	0.5	Yes	Yes	Yes	No	Yes	Yes	No	0	0	7	Yes	Yes
Plum Borough	Fiesta Dr.	2.0	No	Yes	Yes	No	Yes	Yes	No	0	0	0	Yes	Yes
Plum Borough	Kane Rd	0.4	No	Yes	No	No	No	No	No	0	0	10	Yes	Yes

Allegheny County Dump Site Survey and Assessment
2017 Report

Municipality	Location	Estimated Tons	Bagged Trash	Household Trash	Plastics	Chemical Waste	Renovation Debris	Yard Waste	Electronics	Large Appliance Count	Television Count	Tire Count	Curbside Recycling	Drop-off Recycling
Plum Borough	Logan's Ferry	4.0	Yes	No	Yes	No	Yes	Yes	No	0	0	15	Yes	Yes
Plum Borough	Logan's Ferry and Browntown	20.0	Yes	Yes	Yes	Yes	Yes	Yes	No	0	0	25	Yes	Yes
Plum Borough	Pierson #1	3.5	No	Yes	Yes	No	Yes	Yes	No	0	0	10	Yes	Yes
Plum Borough	Pierson #2	1.0	No	Yes	No	No	Yes	Yes	No	0	0	15	Yes	Yes
Plum Borough	Walnut St.	1.0	No	Yes	Yes	No	Yes	Yes	No	0	0	0	Yes	Yes
Plum Borough	Webster Rd.	0.4	No	No	No	No	No	No	No	0	0	10	Yes	Yes
Port Vue	Grandview Drive Alley	2.0	No	No	No	No	Yes	Yes	No	0	0	2	Yes	Yes
Port Vue	McClure Drive	1.0	No	No	No	No	Yes	No	No	0	0	30	Yes	Yes
Port Vue	Port Vue Avenue	0.5	No	Yes	Yes	No	No	Yes	No	1	0	10	Yes	Yes
Rankin	Holland Ave	1.5	No	Yes	Yes	No	No	No	No	0	2	6	No	No
Rankin	North Holland	1.4	Yes	Yes	Yes	Yes	Yes	No	No	0	1	40	No	No
Rankin	Pattison Ave	0.5	No	Yes	Yes	No	No	No	No	0	1	2	No	No
Rankin	Winter Alley	0.5	No	Yes	Yes	No	Yes	Yes	No	0	0	6	No	No
Robinson	N Petrie Road	0.2	No	Yes	Yes	No	Yes	Yes	No	0	0	5	Yes	Yes
Robinson	Station Street 1	0.3	No	Yes	No	No	No	No	No	0	1	0	Yes	Yes
Robinson	Station Street (Robinson) 2	2.0	No	Yes	Yes	No	Yes	Yes	No	0	5	15	Yes	Yes
Robinson	Station Street (Robinson) 3	1.4	No	No	No	No	Yes	Yes	No	0	0	40	Yes	Yes
Ross	111 Spruce Valley Dr.	0.5	No	No	No	No	No	Yes	No	0	0	10	Yes	Yes
Ross	549 Jacks Run	1.0	No	Yes	No	No	Yes	Yes	No	1	0	3	Yes	Yes
Ross	Forest and Center near 279	5.0	No	Yes	Yes	No	Yes	Yes	Yes	25	5	50	Yes	Yes
Ross	Klemont Ave	1.5	Yes	Yes	Yes	Yes	Yes	Yes	No	0	1	6	Yes	Yes
Ross	Old English and Rochester	0.4	No	No	No	No	No	No	No	0	0	12	Yes	Yes

Allegheny County Dump Site Survey and Assessment
2017 Report

Municipality	Location	Estimated Tons	Bagged Trash	Household Trash	Plastics	Chemical Waste	Renovation Debris	Yard Waste	Electronics	Large Appliance Count	Television Count	Tire Count	Curbside Recycling	Drop-off Recycling
Ross	William St. Ross Twp.	1.0	No	Yes	Yes	No	Yes	No	No	0	2	5	Yes	Yes
Scott Township	Braun Way	1.0	No	Yes	Yes	No	Yes	Yes	No	0	0	8	Yes	Yes
Scott Township	Boroview	1.0	Yes	Yes	Yes	No	Yes	Yes	Yes	1	0	2	Yes	Yes
Scott Township	Keystone Drive	1.0	No	Yes	Yes	No	Yes	No	Yes	0	0	5	Yes	Yes
Shaler	Craft Avenue Shaler	2.0	No	Yes	Yes	No	Yes	Yes	No	0	3	30	Yes	Yes
Shaler	Little Pine Creek		No	Yes	No	No	Yes	Yes	Yes	2	0	6	Yes	Yes
Shaler	Newland Ln	1.0	No	No	No	No	Yes	Yes	No	0	0	1	Yes	Yes
Shaler	Saint Peter Street	0.3	No	Yes	No	No	No	Yes	No	0	0	0	Yes	Yes
South Fayette	Bowman Road Site 2	0.2	Yes	No	No	No	Yes	No	No	0	0	0	Yes	Yes
South Fayette	Cecil Reissing Road Site 1	0.3	No	No	No	No	Yes	No	No	0	0	2	Yes	Yes
South Fayette	Cecil Reissing Road Site 2	0.9	No	No	No	No	No	No	No	0	0	25	Yes	Yes
South Fayette	Cecil-Sturgeon Rd 1	0.5	No	No	No	No	Yes	No	No	0	0	0	Yes	Yes
South Fayette	Cecil-Sturgeon Rd 2	0.3	No	No	No	No	No	No	No	0	0	0	Yes	Yes
South Fayette	Coal Pit Run Road Site 1	0.5	No	No	No	No	Yes	No	No	0	0	1	Yes	Yes
South Fayette	Hickory Grade Road	4.0	No	No	No	No	No	No	No	0	0	100	Yes	Yes
South Fayette	Laurel Hill Road 1	0.4	No	No	No	No	No	Yes	No	0	0	10	Yes	Yes
South Fayette	Laurel Hill Road 2	0.1	No	Yes	No	No	No	No	No	0	0	0	Yes	Yes
South Fayette	Millers Run Rd	2.0	No	No	No	No	Yes	Yes	No	0	0	0	Yes	Yes
South Fayette	Robinson Road Pullout	2.0	No	Yes	No	No	Yes	Yes	No	0	0	7	Yes	Yes
South Fayette	Sygan Road	2.0	No	Yes	No	No	Yes	No	No	2	0	2	Yes	Yes
South Park	Piney Fork Road	0.3	No	No	No	No	Yes	No	No	0	1	1	Yes	Yes
South Versailles	Coulterville Road	0.8	No	Yes	No	Yes	No	No	No	0	0	24	Yes	Yes

Allegheny County Dump Site Survey and Assessment
2017 Report

Municipality	Location	Estimated Tons	Bagged Trash	Household Trash	Plastics	Chemical Waste	Renovation Debris	Yard Waste	Electronics	Large Appliance Count	Television Count	Tire Count	Curbside Recycling	Drop-off Recycling
Springdale	Butler Street	0.5	Yes	No	No	No	Yes	No	No	0	2	0	No	No
Stowe Township	Davis Ave above Stowe	1.0	No	Yes	No	No	Yes	Yes	No	0	0	15	Yes	Yes
Stowe Township	Federal Street bet. 5th and 6th St.	5.0	No	Yes	Yes	No	Yes	Yes	No	0	0	100	Yes	Yes
Stowe Township	Gordon Aly	1.0	No	Yes	No	No	Yes	No	Yes	0	2	12	Yes	Yes
Stowe Township	Penn Alley and 5th	0.3	No	No	No	No	Yes	Yes	Yes	0	4	0	Yes	Yes
Stowe Township	Reed Alley	1.5	Yes	Yes	No	No	Yes	No	No	0	0	2	Yes	Yes
Stowe Township	Ridge Ave	0.4	No	Yes	No	No	Yes	No	No	0	0	10	Yes	Yes
Stowe Township	Shaffer Alley	0.5	No	Yes	No	No	Yes	Yes	No	0	0	2	Yes	Yes
Stowe Township	Stowe Ave Ext.	2.0	No	Yes	No	No	Yes	Yes	No	1	0	50	Yes	Yes
Stowe Township	Wilcrist Alley	1.0	No	Yes	Yes	No	No	No	No	0	16	6	Yes	Yes
Swissvale	Arthur Street Loop	10.0	Yes	Yes	Yes	No	Yes	Yes	No	0	0	25	Yes	Yes
Swissvale	Collingwood Ave	0.8	Yes	Yes	Yes	No	Yes	Yes	No	0	4	20	Yes	Yes
Swissvale	Corey Street	0.5	No	No	Yes	No	Yes	Yes	No	0	0	5	Yes	Yes
Swissvale	Lafayette Street and Florence Ave	0.5	No	No	Yes	No	Yes	Yes	No	0	0	0	Yes	Yes
Swissvale	Short Street and Woodstock Ave	2.0	No	Yes	Yes	No	Yes	Yes	No	0	0	0	Yes	Yes
Tarentum	Sun Mine Road	1.0	No	Yes	Yes	No	Yes	Yes	No	0	0	20	No	No
Turtle Creek	Fairview Avenue	1.0	Yes	Yes	Yes	No	Yes	Yes	No	0	1	5	Yes	Yes
Turtle Creek	Mortimer Avenue 1	1.2	Yes	Yes	Yes	No	Yes	Yes	No	1	0	30	Yes	Yes
Turtle Creek	Mortimer Avenue 2	2.0	Yes	Yes	Yes	No	Yes	Yes	Yes	0	1	10	Yes	Yes
Versailles	Harphen Street	0.3	No	No	No	No	No	Yes	No	0	0	1	Yes	Yes
Versailles	Long Run	0.5	Yes	Yes	Yes	Yes	No	No	No	0	1	12	Yes	Yes
West Deer Twp	Benjamin Street and Bessemer Street	2.5	No	Yes	Yes	No	Yes	Yes	No	0	0	50	Yes	Yes

Allegheny County Dump Site Survey and Assessment
2017 Report

Municipality	Location	Estimated Tons	Bagged Trash	Household Trash	Plastics	Chemical Waste	Renovation Debris	Yard Waste	Electronics	Large Appliance Count	Television Count	Tire Count	Curbside Recycling	Drop-off Recycling
West Elizabeth	State Street	1.5	No	No	No	No	No	No	No	0	4	40	No	No
West Mifflin	327 Coal Rd Ext.	0.5	Yes	Yes	Yes	No	No	Yes	No	0	0	5	Yes	Yes
West Mifflin	Grant Ave Ext under Homeville	0.4	No	No	No	No	No	No	No	0	0	12	Yes	Yes
West Mifflin	Homestead Duquesne Rd	0.5	No	Yes	No	No	Yes	No	No	0	0	5	Yes	Yes
West Mifflin	Lebanon School Road	1.2	No	Yes	No	No	No	No	No	0	0	35	Yes	Yes
West Mifflin	Lower Bull Run Road	0.7	No	No	No	No	No	Yes	No	0	0	20	Yes	Yes
West Mifflin	New England Road 2	1.0	No	No	No	No	Yes	No	No	0	1	10	Yes	Yes
West Mifflin	New England Road 3	3.0	No	Yes	Yes	No	Yes	No	No	0	6	2	Yes	Yes
West Mifflin	Oak Street dead end	0.5	No	No	No	No	Yes	Yes	No	0	0	1	Yes	Yes
West Mifflin	Short Street dead end	1.0	Yes	Yes	Yes	No	Yes	Yes	No	3	0	18	Yes	Yes
West Mifflin	Smith Lane	1.8	No	No	No	No	No	No	No	0	0	50	Yes	Yes
West Mifflin	Spring Street and Greensprings	0.3	No	Yes	Yes	No	Yes	No	No	0	2	8	Yes	Yes
West Mifflin	St. Agnes and Bull Run Rd.	1.2	No	No	No	No	No	No	No	0	0	35	Yes	Yes
West Mifflin	Village lane	0.3	No	Yes	No	No	Yes	Yes	No	0	1	9	Yes	Yes
West Homestead	203 Grandview Blvd	0.5	No	Yes	Yes	No	Yes	Yes	No	0	0	5	Yes	Yes
Whitaker	Sherman	1.0	No	Yes	No	No	Yes	Yes	No	0	0	10	Yes	Yes
White Oak	Clinton Street	1.0	Yes	No	No	No	Yes	Yes	No	0	0	3	Yes	Yes
White Oak	Delaware Street	0.5	No	Yes	Yes	No	Yes	No	No	0	1	9	Yes	Yes
White Oak	Done and Navy Street	0.3	No	Yes	Yes	No	No	No	No	0	0	6	Yes	Yes
White Oak	Heckman and McKee	0.4	No	No	No	No	No	No	No	0	0	10	Yes	Yes
White Oak	Lower Heckman Road	1.8	Yes	Yes	Yes	Yes	No	No	No	0	0	50	Yes	Yes
White Oak	McClintock Rd	1.0	No	Yes	No	No	Yes	Yes	No	0	0	0	Yes	Yes

Allegheny County Dump Site Survey and Assessment
2017 Report

Municipality	Location	Estimated Tons	Bagged Trash	Household Trash	Plastics	Chemical Waste	Renovation Debris	Yard Waste	Electronics	Large Appliance Count	Television Count	Tire Count	Curbside Recycling	Drop-off Recycling
White Oak	Osbourne and Public	0.2	No	No	No	No	No	No	No	0	0	6	Yes	Yes
White Oak	Pennsylvania Ave Under Congress	1.0	No	Yes	Yes	No	No	No	No	0	1	20	Yes	Yes
White Oak	Staisey Street	0.7	No	No	No	No	No	No	No	0	0	20	Yes	Yes
White Oak	Stewartsville Hollow Road Site 2	0.5	Yes	No	No	No	No	Yes	No	0	3	0	Yes	Yes
Wilkins	Quarry and Barbour	0.9	No	Yes	Yes	No	No	No	No	0	0	25	Yes	Yes
Wilkins	Quarry Street	0.3	No	Yes	Yes	No	No	No	No	0	0	4	Yes	Yes
Wilkins	Rodi Road 1	4.0	No	Yes	Yes	No	Yes	Yes	No	0	0	10	Yes	Yes
Wilkins	Rodi Road 2	0.5	Yes	Yes	No	No	No	No	No	0	0	5	Yes	Yes
Wilkins	Thompson Run Road 2	0.3	Yes	Yes	No	No	No	Yes	No	0	0	8	Yes	Yes
Wilkinsburg	Boyd Way	1.0	No	No	No	No	Yes	Yes	No	0	0	20	Yes	Yes
Wilkinsburg	Bryan Way	0.5	No	Yes	No	No	Yes	Yes	No	0	0	7	Yes	Yes
Wilkinsburg	Campbell Street 1	2.0	Yes	Yes	Yes	No	Yes	Yes	No	1	2	0	Yes	Yes
Wilkinsburg	Campbell Street 2	0.7	No	Yes	Yes	No	No	Yes	No	0	0	20	Yes	Yes
Wilkinsburg	Campbell Street 3	1.0	No	No	No	No	No	No	No	0	0	30	Yes	Yes
Wilkinsburg	Coal Street	2.3	Yes	Yes	Yes	No	Yes	Yes	No	0	10	60	Yes	Yes
Wilkinsburg	Cresson Street	4.0	Yes	Yes	Yes	No	Yes	Yes	No	0	5	20	Yes	Yes
Wilkinsburg	Culp Way	5.0	Yes	Yes	Yes	No	Yes	Yes	No	0	0	20	Yes	Yes
Wilkinsburg	Dell Way	0.3	No	Yes	Yes	No	No	Yes	No	0	1	8	Yes	Yes
Wilkinsburg	East Street	0.5	Yes	Yes	Yes	No	Yes	Yes	No	0	1	15	Yes	Yes
Wilkinsburg	East Swissvale Avenue	1.0	Yes	Yes	Yes	No	Yes	Yes	No	0	14	10	Yes	Yes
Wilkinsburg	Ecker and Hazel Way	5.0	Yes	Yes	Yes	No	Yes	Yes	No	1	2	20	Yes	Yes
Wilkinsburg	Elbe Way	0.3	Yes	Yes	Yes	No	Yes	Yes	No	0	0	8	Yes	Yes

Allegheny County Dump Site Survey and Assessment
2017 Report

Municipality	Location	Estimated Tons	Bagged Trash	Household Trash	Plastics	Chemical Waste	Renovation Debris	Yard Waste	Electronics	Large Appliance Count	Television Count	Tire Count	Curbside Recycling	Drop-off Recycling
Wilkinsburg	Ella Street	0.5	Yes	Yes	Yes	No	Yes	Yes	No	0	5	7	Yes	Yes
Wilkinsburg	Elm Street	5.0	Yes	Yes	Yes	No	Yes	Yes	No	0	0	4	Yes	Yes
Wilkinsburg	Fahnestock Avenue	2.1	No	Yes	No	No	Yes	Yes	No	0	0	60	Yes	Yes
Wilkinsburg	Franklin Avenue	1.0	Yes	Yes	Yes	No	Yes	Yes	No	0	1	7	Yes	Yes
Wilkinsburg	Glenn Avenue	1.0	No	Yes	Yes	No	Yes	Yes	No	0	0	30	Yes	Yes
Wilkinsburg	Grant Way	1.0	Yes	Yes	Yes	No	Yes	Yes	No	0	12	7	Yes	Yes
Wilkinsburg	Hackett Way	1.0	Yes	Yes	Yes	No	Yes	Yes	No	1	0	15	Yes	Yes
Wilkinsburg	Hill Avenue	0.3	No	No	Yes	No	Yes	No	No	0	0	0	Yes	Yes
Wilkinsburg	Horner Way	3.0	No	Yes	Yes	No	Yes	Yes	No	0	5	5	Yes	Yes
Wilkinsburg	James Street	0.5	Yes	Yes	Yes	No	Yes	Yes	No	0	1	2	Yes	Yes
Wilkinsburg	Mill Street	0.5	Yes	Yes	Yes	No	Yes	Yes	No	0	0	4	Yes	Yes
Wilkinsburg	Mooseheart Street	1.5	Yes	Yes	Yes	No	Yes	Yes	No	0	0	4	Yes	Yes
Wilkinsburg	No Name Alley 1	24.5	Yes	Yes	Yes	No	Yes	Yes	No	0	0	700	Yes	Yes
Wilkinsburg	No Name Alley 2	2.0	Yes	Yes	Yes	No	Yes	Yes	No	0	8	15	Yes	Yes
Wilkinsburg	Oak Way	1.0	Yes	Yes	Yes	No	Yes	Yes	No	0	1	8	Yes	Yes
Wilkinsburg	Outlook Way	1.0	No	Yes	Yes	No	No	Yes	No	0	6	25	Yes	Yes
Wilkinsburg	Pasadena Avenue	0.3	Yes	Yes	Yes	No	Yes	Yes	No	0	0	0	Yes	Yes
Wilkinsburg	Princeton Blvd 1	0.5	No	Yes	Yes	No	Yes	Yes	No	0	3	1	Yes	Yes
Wilkinsburg	Princeton Blvd 2	0.4	Yes	Yes	Yes	No	Yes	Yes	No	0	1	10	Yes	Yes
Wilkinsburg	Rebecca Avenue	0.5	Yes	Yes	Yes	No	Yes	Yes	No	0	0	0	Yes	Yes
Wilkinsburg	Stoner Way	0.0	No	Yes	Yes	No	Yes	Yes	No	0	0	0	Yes	Yes
Wilkinsburg	Telephone Way	1.0	Yes	Yes	Yes	No	Yes	No	No	1	0	0	Yes	Yes

Allegheny County Dump Site Survey and Assessment
2017 Report

Municipality	Location	Estimated Tons	Bagged Trash	Household Trash	Plastics	Chemical Waste	Renovation Debris	Yard Waste	Electronics	Large Appliance Count	Television Count	Tire Count	Curbside Recycling	Drop-off Recycling
Wilkinsburg	Washington Way	1.5	Yes	Yes	Yes	No	Yes	Yes	No	0	3	16	Yes	Yes
Wilmerding	Morningside Avenue	1.0	No	No	No	No	Yes	Yes	No	0	0	5	No	No
Wilmerding	Orient Street 1	2.0	No	Yes	Yes	No	Yes	Yes	No	0	1	12	No	No
Wilmerding	Orient Street 2	4.0	Yes	Yes	Yes	No	Yes	Yes	Yes	2	20	50	No	No
Wilmerding	Wilmerding/ Monroeville	1.0	Yes	Yes	No	No	Yes	Yes	No	0	0	0	No	No
		1404.0								173	938	27038		